

The **isocheck 23C & 14C** systems (for concrete floors)

LAYING & FIXING INSTRUCTIONS

SITE CONDITIONS

The presence of steel work, lift shafts and even ceiling penetrations can often impair acoustic performance. If any of these (or other issues not previously declared) are present on your site, please contact us for additional advice.

Before installation of **isocheck** it is essential that installation should not commence until you have complied with the following conditions.

1/ Sub Floor

Floor should be a level screed / concrete with a smooth surface, or an in-situ concrete base. The floors should be level, sufficiently dry and swept clean to allow the **isocheck 23C or 14C** to be laid flat, without any irregularities of sufficient height to bridge the resilient layer.

2/ Laying timescale

Installation of **isocheck** should not commence until roof, window glazing and wet trades are completed and the structure is watertight. Leave overnight for adhesive to cure before trafficking the newly installed system.

3/ Care of Materials

isocheck must be kept in a dry storage area. Deliveries should be scheduled to coincide with availability of suitable dry storage areas.

INSTALLATION

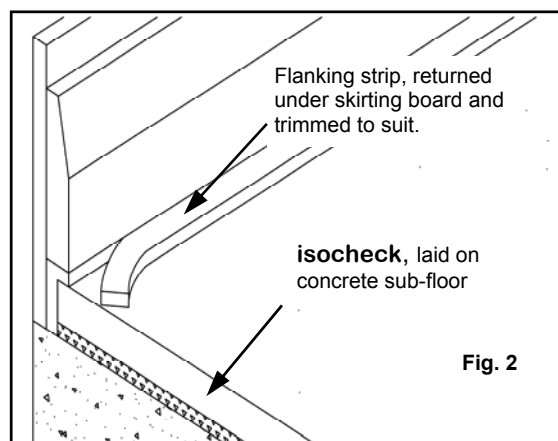
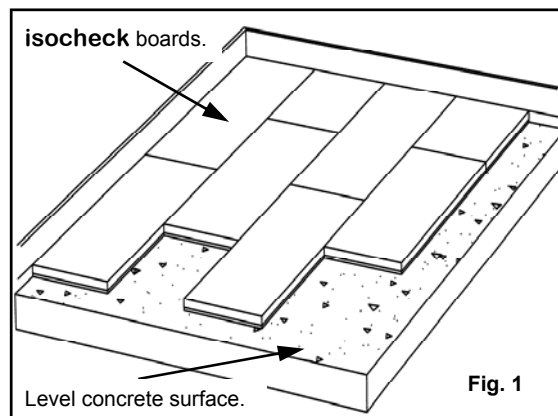
To commence installation, fitting should begin at the furthest point from the entrance and marked out so as not to finish with any panels less than 200mm wide. The decking must be laid in 'stretcher-bond' pattern, with all joints glued and staggered See **Fig. 1**.

No Mechanical fixings are necessary.

isocheck adhesive is applied to both the top of the tongue and the bottom of the groove on each side of each joint. The boards are then pushed tightly together. Surplus adhesive should be wiped away from the surface with a damp cloth.

FLANKING STRIPS

isocheck flanking strips provide isolation of the flooring system from all vertical structures and penetrations. The strip is trapped to the wall and returned down over the **isocheck** boards. The skirting board is then fixed to the wall securing the flanking strip between the skirting board and the **isocheck**. After the skirting board is installed, simply trim the flanking strip flush with a sharp knife. See **Fig. 2**.



STUD PARTITIONING

Stud partitioning should be built from the sub floor wherever possible. If it is your intention to build off the top of **isocheck 23C** additional advice can be provided. All partitions built from the sub-floor will require **isocheck** flanking strip installed.

PROTECTION

The finished **isocheck 23C&14C** systems should be protected with an appropriate layer immediately after being installed to prevent damage by any following tradesmen. It is advisable to protect the floor surface from any damage by following trades as in most cases this is the last floor component that remains an integral part of the structure.

Issue: 1

Sheet 1 of 2

Isomass Ltd

St Johns Innovation Centre, Cowley Road,

Cambridge, CB4 0WS

T: 0845 838 33 99

F: 0845 838 33 89

E: technical@isomass.co.uk W: www.isomass.co.uk



The **isocheck 23C & 14C** systems (for concrete floors) LAYING & FIXING INSTRUCTIONS continued

DOOR OPENINGS / ARCHITRAVES / SKIRTINGS

Door openings should have linings fitted prior to the installation of the acoustic floor.

Boards should be carefully detailed to ensure a good fit. Although not ideal architraves and stops can be fixed after floor installation, leaving a 2/3mm gap from the surface of the floor.

To prevent flanking transmission **all** skirting must be isolated from the floor surface. See **Fig. 2**.

Before incorporation, place **isocheck** flanking strip around the edge of the **isocheck 23C or 14C** board before pushing into position. Remove any excess with a sharp knife, flush to the skirting face.

KITCHENS & BATHROOMS

Appliances and sanitary ware, with rigid plumbing connections that penetrate the system, should be isolated from the sub floor and floating floor by cutting a hole up to 10mm larger than the service diameter and filling the gap with a flexible sealant. Ideally kitchen worktops should be isolated from the wall with an **isocheck** flanking isolation strip and trimmed flush with surface before tiling commences.

Kitchen

When laying **isocheck 23C or 14C** in a kitchen we suggest that for best performance the kitchen units are installed on the sub-floor on pads, so that the **isocheck** can terminate at the legs of the units. The plinth can then be installed to the kitchen unit legs, making a neat, flush finish. Lay the floor in areas where appliances will sit, allowing for adequate height below the work surfaces. If installing the units on the floating floor additional advice should be sought to reduce the potential for unwanted impact flanking noise.

Bathroom

When laying the **isocheck 23C or 14C** in a bathroom we suggest that for best performance the bath should be supported from the sub-floor on isolation pads, and the floating floor terminate at the legs of the bath as close as possible. The bath panel can then be installed making a neat, flush finish.

Plywood the same height as the **isocheck** should be laid under the bath, toilet and wash basin area and the joints filled with silicon or an alternative acoustic sealant where necessary.

CEILINGS

Ceiling boards should be installed first, especially before any dry-lining of walls (such as dot & dab) to prevent potential flanking transmission. Ceilings should be boarded with a minimum mass of 10kg/m², preferably with a minimum void of 75mm and fixed to resilient bars or suspended from a metal frame system in accordance with manufacturers recommendations.

Health and Safety

HANDLING

Some **isocheck** boards are **HEAVY**. Please observe proper lifting methods and if transporting around site, by hand. Care should also be taken to protect hands from splinters during manual handling.

CUTTING

The cutting of boards, either by hand or machine, will produce dust that may be an irritant if inhaled. **USE** dust masks when carrying out any cutting operations

STORAGE

The foam resilient layer, on **isocheck** is manufactured using polyethylene polymers. Therefore, boards should be stored in safe dry areas and kept away from naked flames. **NO SMOKING** policies must be strictly enforced.

Issue: 1

Sheet 2 of 2

Isomass Ltd

St Johns Innovation Centre, Cowley Road,
Cambridge, CB4 0WS

T: 0845 838 33 99

F: 0845 838 33 89

E: technical@isomass.co.uk W: www.isomass.co.uk

