

Isocheck 24T & 15T Systems

overlay platform system direct to floorboards

Manufactured with recycled Isofiba

Suitable for: E1 - new build • E1 - material change of use

Conversions • Refurbishments • New build

CI/SfB
| (43) | (Y) | (P2) |

March 2010

Rev 3

product data sheet

Product data

Overall size:	Isocheck 24T	2400mm x 600mm x 24mm
	Isocheck 15T	1200mm x 600mm x 15mm
Resilient layer thickness:		6mm
Resilient layer:		Isofiba
Weight:	Isocheck 24T	19.0kg per sheet
	Isocheck 15T	5.2kg per sheet

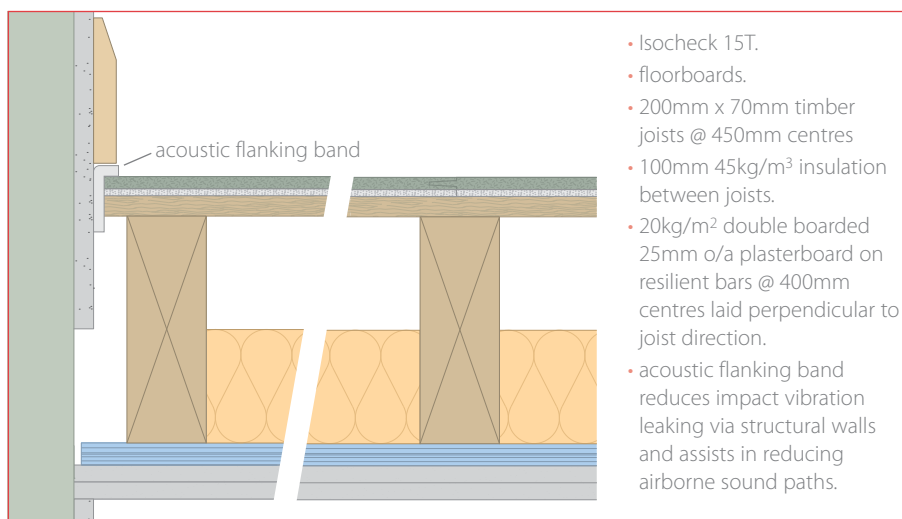
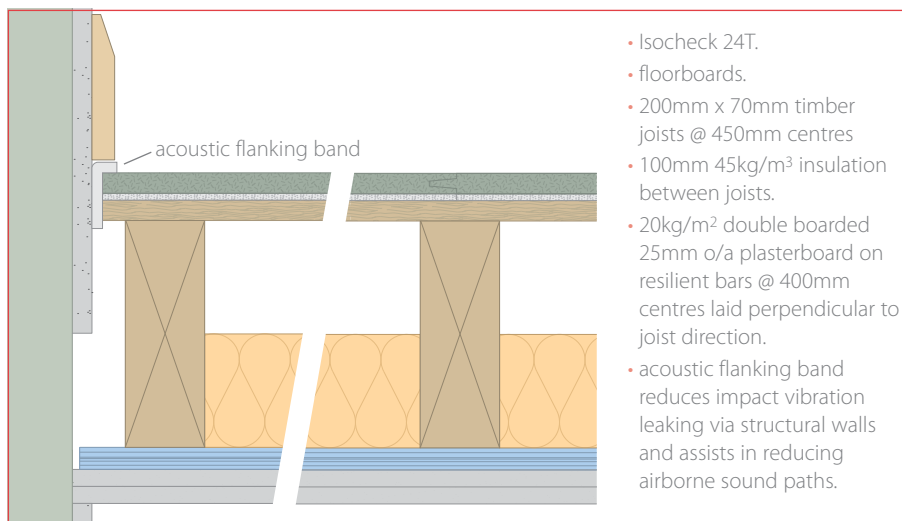
Performance (on the constructions below)

Treated floor with:	$D_{nT,w} + C_{tr}$	$L'_{nT,w}$
Isocheck 24T	49dB	54dB
Isocheck 15T	48dB	52dB

Description

Isocheck 24T & 15T are high performance systems designed to reduce sound transmission through traditional joisted timber floors.

Isocheck 24T consists of a 6mm layer of Isofiba bonded to 18mm P5 V313 moisture resistant chipboard, whereas Isocheck 15T consists of a 6mm layer of Isofiba bonded to 9mm moisture resistant medium density fibreboard. When installed as part of a complete party floor construction either system enables a traditional timber joisted floor to meet the sound transmission standards of ADE 2003 (amended 2004).



Every effort has been taken in the preparation of this sheet to ensure the accuracy of representations contained herein. Recommendations as to the use of materials, construction details and methods of installation are given in good faith and relate to typical situations. However, every site has different characteristics and reliance should not be placed upon the foregoing recommendations. Advice can be given as to specific applications.

Specification

The acoustic floor shall be:

- **Isocheck 24T or 15T system**, manufactured by Isomass Ltd. St Johns Innovation Centre, Cowley Road, Cambridge, CB4 0WS and installed in accordance with manufacturer's instructions / recommendations.

Installation

- Apply Isocheck Acoustic Angled Flanking Band on the edges of the Isocheck boards just before they are pushed against the perimeter walls to isolate the board from the wall.
- Lay Isocheck 24T or 15T over a structural timber sub-floor, in brick bond pattern, applying Isocheck adhesive to all tongued and grooved panel joints.
- Install skirting and trim off excess Flanking Band.
- Full installation instructions are available and must be used in conjunction when laying this floating floor system.

For advice on treatment of services and penetrations, consult our brochure or visit our website:

www.isomass.co.uk

Technical enquiries

Tel: **0845 838 33 99**

Fax: **0845 838 33 89**

Email: info@isomass.co.uk

