

# Isocheck 32T System

direct to joists system (using a resilient bar ceiling)

Manufactured with fire rated Isolate FR foam

Suitable for: E1 - new build • E1 - material change of use

Conversions • Refurbishments • New build

CI/SfB  
(43) (Y) (P2)  
March 2010 Rev 4

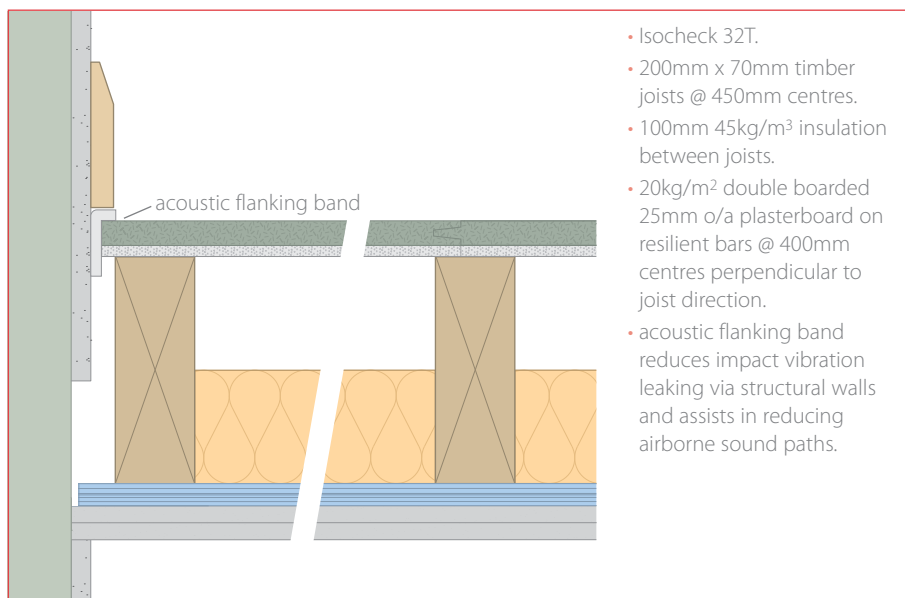
## product data sheet

### Product data

Overall size:	2400mm x 600mm x 32mm
Resilient layer thickness:	10mm
Resilient layer:	Isolate FR: class 1 and thermally rated
Weight:	23.1kg per sheet

### Performance (on the construction below)

Treated floor with:	$D_{nT,w} + C_{tr}$	$L'_{nT,w}$
Isocheck 32T with resilient bar ceiling	46dB	54dB



Every effort has been taken in the preparation of this sheet to ensure the accuracy of representations contained herein. Recommendations as to the use of materials, construction details and methods of installation are given in good faith and relate to typical situations. However, every site has different characteristics and reliance should not be placed upon the foregoing recommendations. Advice can be given as to specific applications.

### Description

Isocheck 32T system is designed to reduce sound transmission and thermally enhance traditional joisted timber floors and concrete floors.

Isocheck 32T consists of a unique 10mm, fire and thermally rated 'Isolate FR' resilient layer, bonded to 22mm P5 V313 moisture resistant chipboard.

When installed as part of a complete party floor, this system enables a traditional timber joisted floor to meet the sound insulation standards of ADE 2003 (amended 2004).

### Specification

The acoustic floor shall be:

- **Isocheck 32T system**, manufactured by Isomass Ltd. St Johns Innovation Centre, Cowley Road, Cambridge, CB4 0WS and installed in accordance with manufacturer's instructions / recommendations.

### Installation

- Lay Isocheck 32T directly to the timber joists, in brick bond pattern, applying Isocheck adhesive to all tongued and grooved panel joints without the need for mechanical fixings.
- Apply Isocheck Angled Acoustic Flanking Band on the edges of the Isocheck boards just before they are pushed against the perimeter walls to isolate the board from the wall.
- Install skirting and trim off excess Flanking Band.
- Full installation instructions are available and must be used in conjunction when laying this floating floor system.

For advice on treatment of services and penetrations, consult our brochure or visit our website:

[www.isomass.co.uk](http://www.isomass.co.uk)



### Technical enquiries

Tel: 0845 838 33 99

Fax: 0845 838 33 89

Email: [info@isomass.co.uk](mailto:info@isomass.co.uk)