

Isocheck Barrier Mats

airborne improvement systems for timber floors and walls

CI/SfB
(43) (Y) (P2)

December 2011 Rev 1

Manufactured with a high-density barium sulphate loaded thermoplastic polymer plasticised with phthalate esters

Suitable for: **domestic noise or vibration issues**

product data sheet

Product data

| | | |
|---------------|---|---|
| Overall size: | Isocheck Barrier Mat 5 Isocheck Barrier Mat 10 | 1.2m x 2.0m 1.2m x 2.0m |
| Thickness: | Isocheck Barrier Mat 5 Isocheck Barrier Mat 10 | 2.0mm 4.0mm |
| Weight: | Isocheck Barrier Mat 5 Isocheck Barrier Mat 10 | 5.0kg/m ² 10.0kg/m ² |

Performance

Isocheck Barrier Mats contain a high performance material that has been acoustically tested at a UKAS certified independent test laboratory.

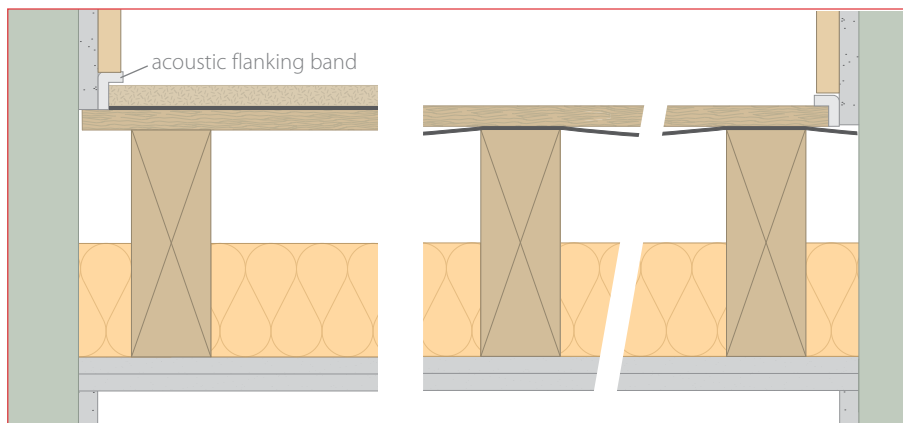
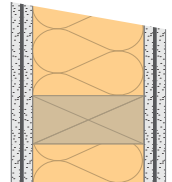
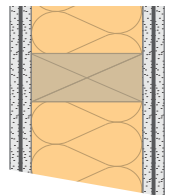
Tested and Rated according to: BS EN ISO 717-1:1997
BS EN ISO 140-3:1995
BS EN ISO 2750-3:1995

Description

Isocheck weight-enhanced Barrier Mat systems are primarily used for their airborne, low-frequency damping properties in floors and walls.

Isocheck weight-enhanced Barrier Mat 5 and Barrier Mat 10 are constructed of high-density barium sulphate loaded thermoplastic polymer, plasticized with phthalate esters and containing mineral fillers. They are black in colour, bitumen free, ecologically neutral and recyclable.

In timber floors, Isocheck Barrier Mats can be laid directly over existing floorboards (left detail below) or draped between joists beneath the timber floorboards (right detail below).



- timber floor finish.
- 2mm or 4mm Barrier Mat.
- existing floorboards
- 200mm x 70mm timber joists @ 450mm centres.
- 100mm 45kg/m³ insulation between joists (total ceiling mass 20kg/m²).
- 25mm double boarded ceiling.

- timber floor finish.
- 2mm or 4mm Barrier Mat draped between joists.
- 200mm x 70mm timber joists @ 450mm centres.
- 100mm 45kg/m³ insulation between joists (total ceiling mass 20kg/m²).
- 25mm double boarded ceiling.

In timber walls the Barrier Mat can be sandwiched between two sheets of plasterboard (right).

Installation

- Two to three layers glued onto timber floors will dramatically reduce airborne noise penetrating the floor from below or airborne noise you are creating being transmitted from above.
- Barrier Mats can be fixed using pins, hangers or banding. Alternatively, it can be bonded using an approved polyurethane-based contact adhesive or a solvent-based acrylic pressure-sensitive adhesive.
- Finished timber floors should be isolated from the skirting using Isocheck Acoustic Flanking Band.

For advice on treatment of services and penetrations, consult our brochure or visit our website:

www.isomass.co.uk

Specification

The acoustic floor shall be **Isocheck Barrier Mat system**, supplied by Isomass Ltd. St Johns Innovation Centre, Cowley Road, Cambridge, CB4 0WS and installed in accordance with manufacturer's instructions / recommendations.

Every effort has been taken in the preparation of this sheet to ensure the accuracy of representations contained herein. Recommendations as to the use of materials, construction details and methods of installation are given in good faith and relate to typical situations. However, every site has different characteristics and reliance should not be placed upon the foregoing recommendations. Advice can be given as to specific applications.



Technical enquiries

Tel: **0845 838 33 99**

Fax: **0845 838 33 89**

Email: info@isomass.co.uk