

Isocheck Isolation Strip

impact sound transmission reduction for partition/separating walls & floors

Manufactured with Cross linked Isopoli

Suitable for: E1 - new build • E1 - material change of use

Conversions • Refurbishments • New build

Description

Isocheck Isolation Strip is designed to enhance sound insulation through concrete floors, traditional joisted timber floors and timber frame systems by isolating timber, steel and masonry separating and partition walls.

Isocheck Isolation Strip is the ideal solution for internal partitions as well as party walls because it reduces structural noise from doors and light switches. It has no adverse effect on the structural stability of the walls and its adhesive backing ensures it can be held in position as the work progresses.

Product data

Roll sizes:	50mm x 5mm x 25m 75mm x 5mm x 25m 100mm x 5mm x 25m 50mm x 12mm x 10m 75mm x 12mm x 10m 100mm x 12mm x 10m
Composition:	Cross linked Isopoli foam, self adhesive one side



Every effort has been taken in the preparation of this sheet to ensure the accuracy of representations contained herein. Recommendations as to the use of materials, construction details and methods of installation are given in good faith and relate to typical situations. However, every site has different characteristics and reliance should not be placed upon the foregoing recommendations. Advice can be given as to specific applications.



Isomass Ltd. St Johns Innovation Centre, Cowley Road, Cambridge, Cambridgeshire CB4 0WS

CI/SfB (43) (Y) (P2)

September 2010 Rev 1

product data sheet

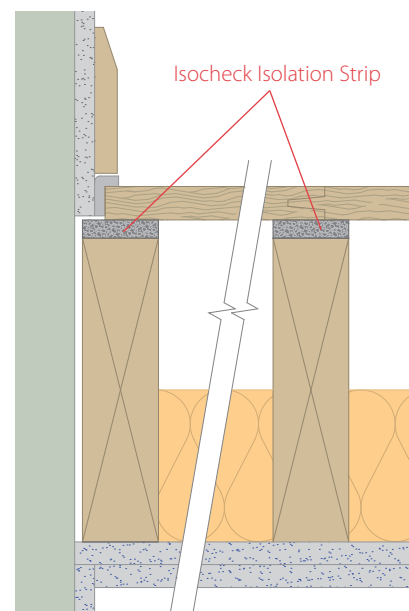
Specification

The acoustic isolation shall be:

- **Isocheck Isolation Strip**, manufactured by Isomass Ltd. St Johns Innovation Centre, Cowley Road, Cambridge, CB4 0WS and installed in accordance with manufacturer's instructions / recommendations.

① Installation direct to timber joists

- Remove backing tape and bond Isocheck Isolation Strip to the top of timber joists joints.



- Apply Isocheck Acoustic Angled Flanking Band on the edges of the floorboards just before they are pushed against the perimeter walls to isolate the board from the wall.
- Install skirting and trim off excess Flanking Band.

For advice on treatment of services and penetrations, consult our brochure or visit our website:

www.isomass.co.uk

Technical enquiries

Tel: 0845 838 33 99

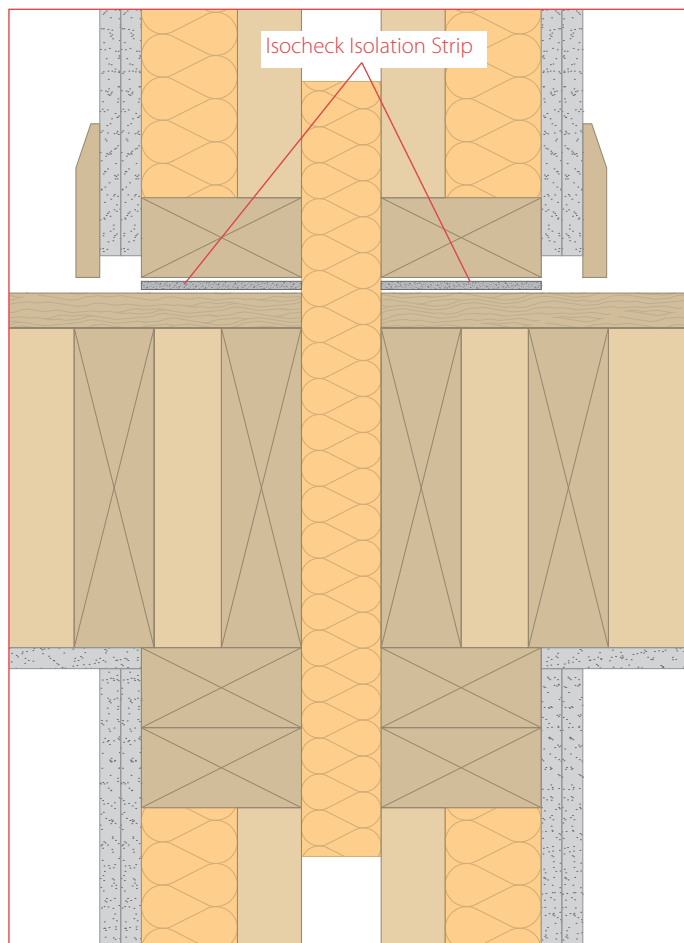
Fax: 0845 838 33 89

Email: info@isomass.co.uk

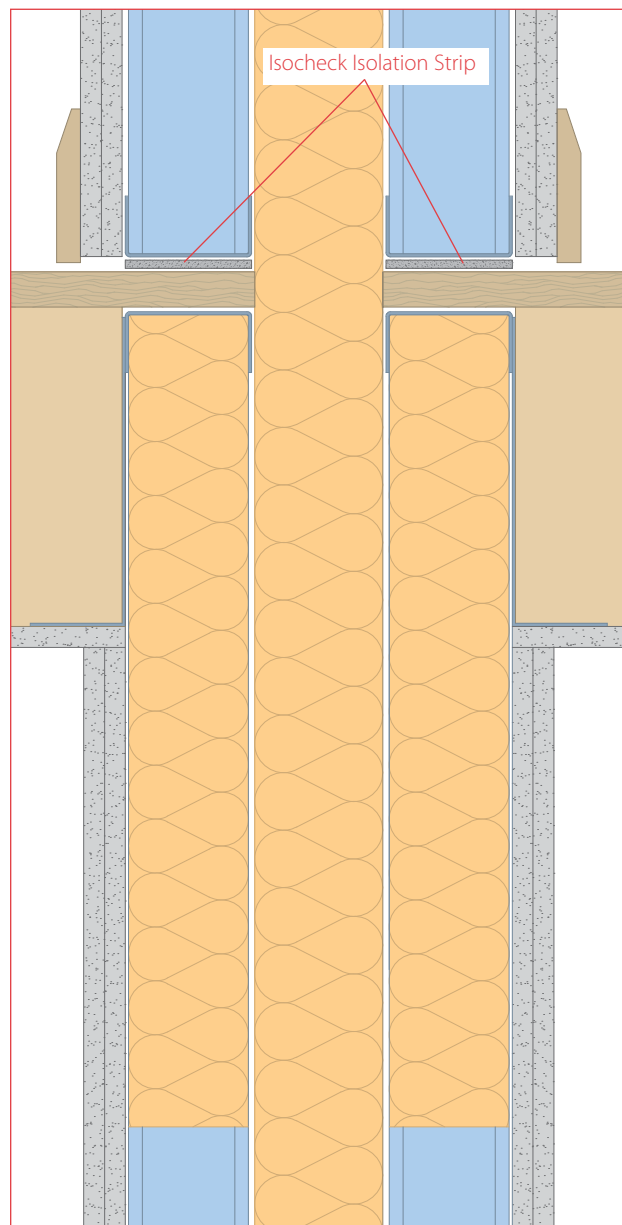
Isocheck Isolation Strip

impact sound transmission reduction for partition/separating walls & floors

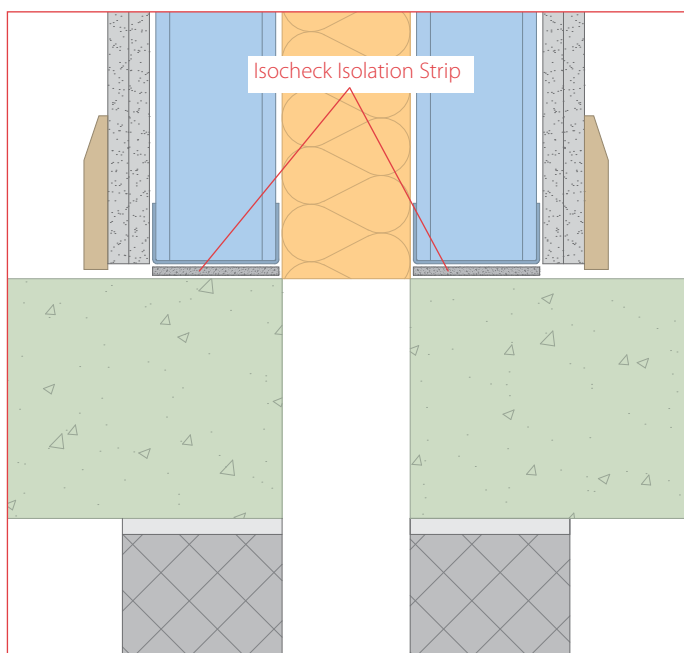
② Isolating a separating or partition wall in a timber frame system



④ Isolating a steel separating or partition wall over a timber floor



③ Isolating a steel separating or partition wall over a concrete floor



Notes

- Detail ① shown indicates how typically to enhance the impact performance in the floor of a domestic dwelling.
- Details ②, ③ and ④ shown indicates how typically to reduce structural noise in partition walls with Isocheck isolation tape.

Technical enquiries

Tel: **0845 838 33 99**

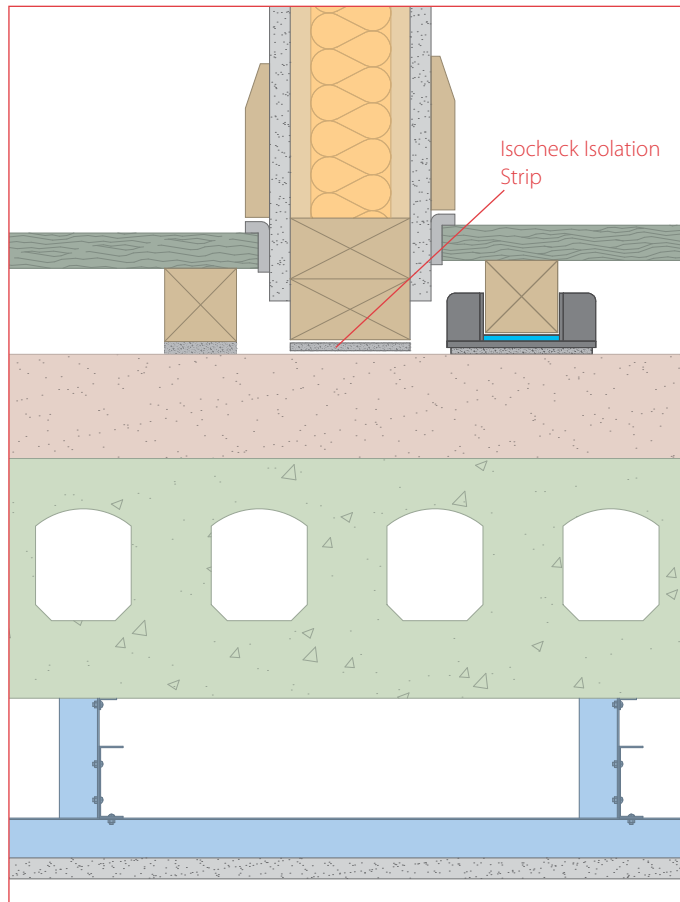
Fax: **0845 838 33 89**

Email: info@isomass.co.uk

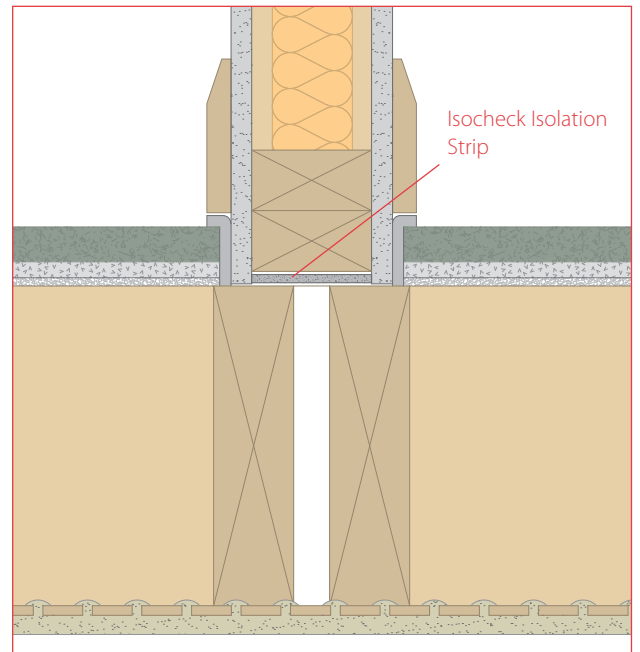
Isocheck Isolation Strip

impact sound transmission reduction for partition/separating walls & floors

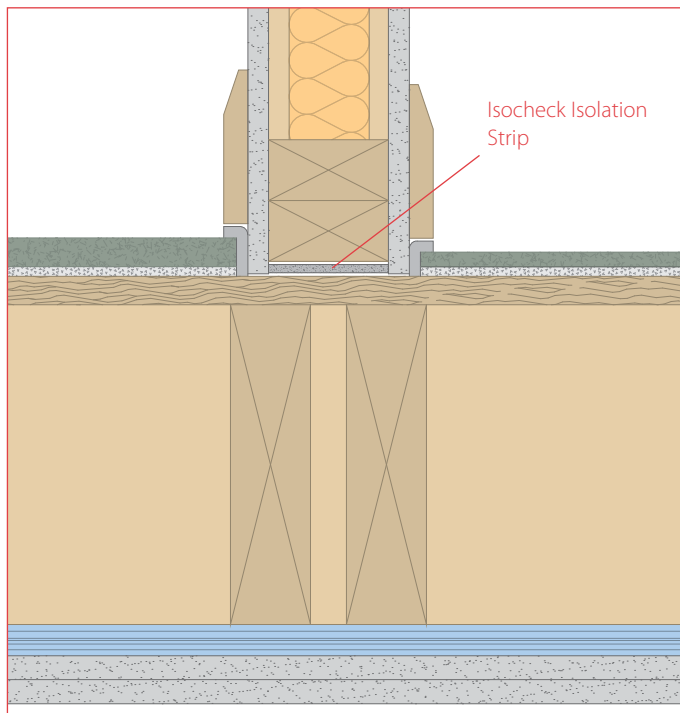
⑤ Isolating a timber stud wall over a concrete/screed floor



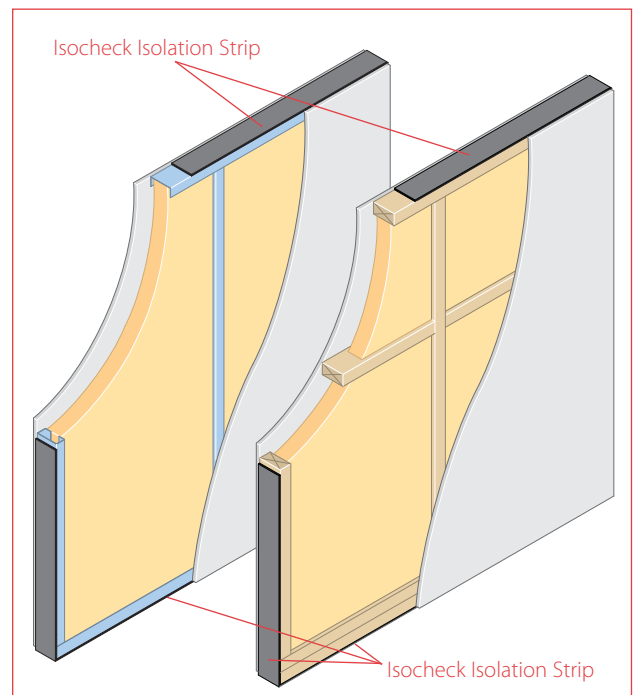
⑦ Isolating a timber stud wall over timber joists



⑥ Isolating a timber stud wall over timber floorboards



⑧ Isolating the edges of a timber or steel stud wall



Notes

- Detail ⑤ shown with Isocheck Shallow Batten floating floor system (left) and Isocheck Cradle floating floorsystem (right).
- Detail ⑥ shown with Isocheck 24T floating floor system (left) and Isocheck 15T floating floor system (right).
- Detail ⑦ shown with Isocheck 37T or 32T floating floor system.
- Detail ⑧ showing Isocheck Isolation Strip isolating the timber or steel stud wall. The isolation strip at the head of the stud wall is optional.

Technical enquiries

Tel: **0845 838 33 99**

Fax: **0845 838 33 89**

Email: info@isomass.co.uk