

# Isowave Wall System 23

Manufactured with DAC foam

Suitable for: E1 - new build (to treat underweight masonry flanking walls)

- domestic noise issues

## product data sheet

### Product data

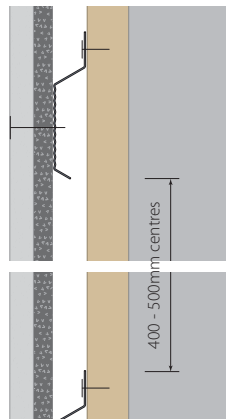
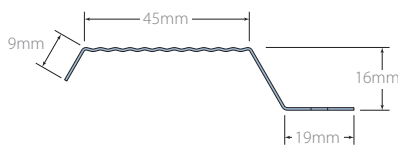
Overall board sizes:	1200mm x 600mm x 22.5mm 2400mm x 600mm x 22.5mm
Isowave foam thickness:	10mm
Weight:	17.3kg/m <sup>2</sup>
Density:	min 1.1g/cm <sup>2</sup>

### Performance (on the construction below)

Reduces unwanted flanking noise in order to comply with approved Doc E 2003 rev 2004.

### Composition

Isowave acoustic foam measured to BS4443 and BS EN ISO 845:1995 bonded to a moisture resistant cement particle board.



### Specification

The acoustic floor shall be:

- **Isowave System 23**, by Isomass Ltd. St Johns Innovation Centre, Cowley Road, Cambridge, CB4 0WS and installed in accordance with manufacturer's instructions / recommendations.



For advice on treatment of services and penetrations, consult our brochure or visit our website:

[www.isomass.co.uk](http://www.isomass.co.uk)

Every effort has been taken in the preparation of this sheet to ensure the accuracy of representations contained herein. Recommendations as to the use of materials, construction details and methods of installation are given in good faith and relate to typical situations. However, every site has different characteristics and reliance should not be placed upon the foregoing recommendations. Advice can be given as to specific applications.

### Description

The Isowave System 23 is for the treatment of excessive flanking sound that bypasses a separating floor via lightweight structural walls.

Isowave System 23 comprises 10mm Isowave acoustic foam bonded to 12.5mm high density, square edged cement particle board. Boards are tapered or squared edged to allow a taped and jointed finish.

The acoustic isowave foam is semi rigid and is an excellent absorber with high damping characteristics when bonded to a reflective stiff surface. Isowave foam is manufactured using water as a blowing agent and is free of CFCs, HFCs or HCFCs.

It complies with requirements of EU Regulation No 2037/2000 for ozone depletion and offers good thermal properties.

### Installation

- Fix securely to all supports working from the centre of each board outward to the edges using the specified method of fixing at 250mm maximum centres with countersunk cross-slot screws 3.9 x 30mm positioned so as to avoid the timber wall battens. Position fixings not less than 20mm from board edges and 50mm from corners.
- The heads of all fixings should be sunk into the surface of the board and stopped with joint filler.
- The square edged cement particle board should be glued with an adhesive, joints to be a maximum 1mm wide. Any excess adhesive to be removed using a spatula once the adhesive has fully hardened.
- A proprietary fine surface treatment should then be applied to face of board (including joints once the adhesive is dry and excess removed) using 250mm spatula or steel float. Excess to be removed immediately using a larger spatula or steel float leaving finish less than 1mm deep.
- Once dry; surface to be lightly sanded if required.
- Where electric socket boxes and light switches are installed the back of the box should be isolated with Isocheck Impacta Pads.

### Technical enquiries

Tel: **0845 838 33 99**

Fax: **0845 838 33 89**

Email: [info@isomass.co.uk](mailto:info@isomass.co.uk)