

Isocheck Deep Batten System

suspended system for timber and steel floors within a timber frame structure

CI/SfB
(43) (Y) (P2)
March 2010 Rev 3

Manufactured with Isopoli or Isofiba

Suitable for: **robust details - new build**

New build timber frame construction • New build steel frame construction • In conjunction with underfloor heating systems

product data sheet

Product data

Overall size:	1800mm x 45mm x 75mm
Resilient layer thickness:	Down to approx. 14mm under a normal domestic load.
Resilient layer:	Isopoli or Isofiba

Performance

Treated floor meets with the Robust Detail descriptive FFT1, typically within Robust Detail E-FT-1, E-FT-2, E-FT-3, E-FS-2, E-FC-1, E-FC-7 and E-FS-1.

Description

Isocheck Deep Batten system is designed to reduce sound transmission through timber floors within a timber frame structure.

Isocheck Deep Batten is a 18mm Isopoli or 15mm Isopoli bonded to a FSC certified 60mm softwood batten as standard. Other batten sizes are available to special order. When installed as part of a complete party floor construction it enables a timber floor to meet the sound transmission standards of ADE 2003 (amended 2004).

Specification

The acoustic floor shall be:

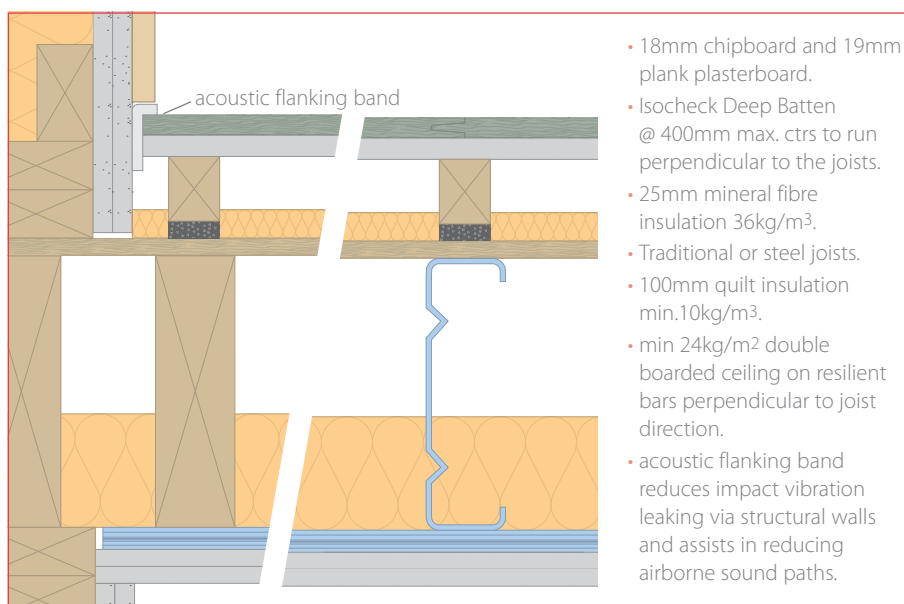
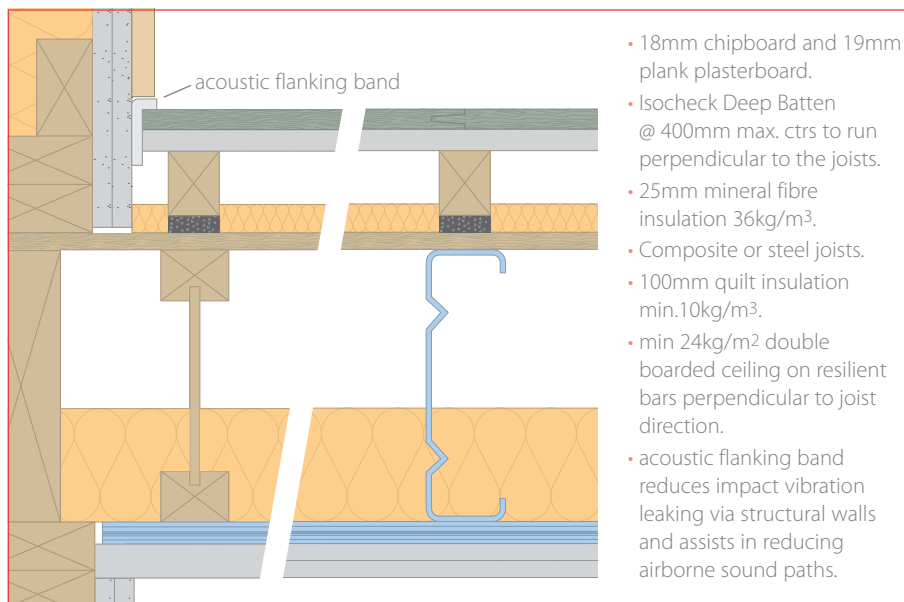
- **Isocheck Deep Batten system**, by Isomass Ltd. St Johns Innovation Centre, Cowley Road, Cambridge, CB4 0WS and installed in accordance with manufacturer's instructions / recommendations.

Installation

- Lay Isocheck Deep Batten resilient layer side down, at 400mm max. centres with 19mm plank plasterboard and 18mm chipboard flooring over.
- Apply Isocheck deep Acoustic Angled Flanking Band on the edges of the chipboard and plasterboard before they are pushed against the perimeter walls to isolate both boards from wall.
- Apply Isocheck adhesive to all tongued and grooved panel joints.
- Install skirting and trim off excess Flanking Band.
- Full installation instructions are available and must be used in conjunction when laying this floating floor system.

For advice on treatment of services and penetrations, consult our brochure or visit our website:

www.isomass.co.uk



Every effort has been taken in the preparation of this sheet to ensure the accuracy of representations contained herein. Recommendations as to the use of materials, construction details and methods of installation are given in good faith and relate to typical situations. However, every site has different characteristics and reliance should not be placed upon the foregoing recommendations. Advice can be given as to specific applications.

isomass[®]
building acoustics

NHBC
TESTED BY NHBC
ACOUSTIC SERVICES



Isomass Ltd. St Johns Innovation Centre, Cowley Road, Cambridge, Cambridgeshire CB4 0WS

Technical enquiries

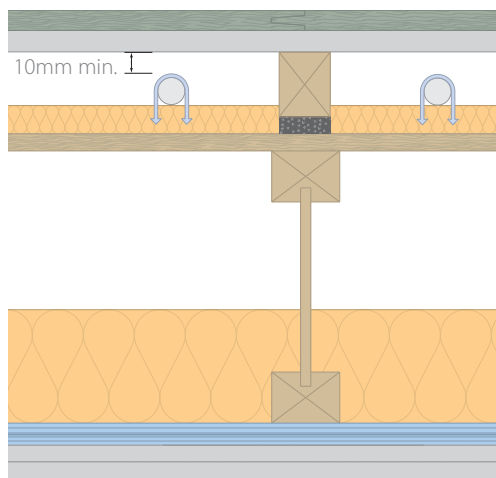
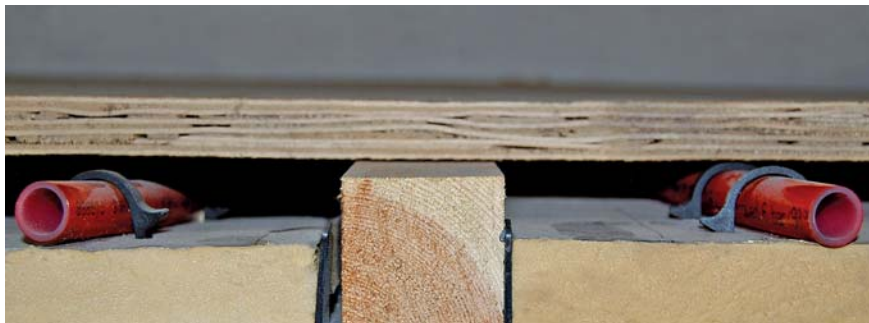
Tel: **0845 838 33 99**

Fax: **0845 838 33 89**

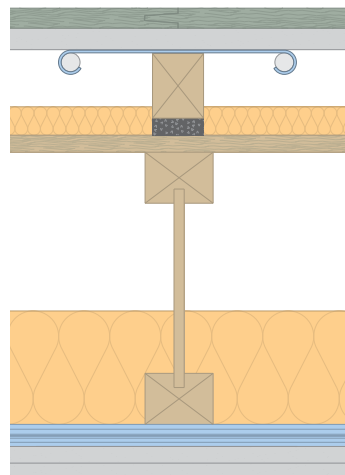
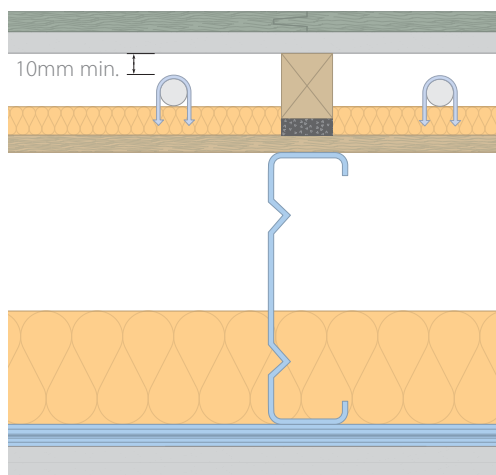
Email: info@isomass.co.uk

Isocheck Deep Batten System

Isocheck deep batten system incorporating an underfloor heating system



- 18mm chipboard and 19mm plank plasterboard.
- Isocheck Deep Batten @ 400mm max. centres to run perpendicular to the joists.
- 25mm mineral fibre insulation 36kg/m³ with pipe fixings.
- Composite or steel joists.
- 100mm quilt insulation min.10kg/m³.
- min 24kg/m² double boarded ceiling on resilient bars perpendicular to joist direction.
- alternative arrangement using propriety supporting pipework tray (bottom right).



Isomass Ltd has developed a number of acoustic floor solutions that could complement the requirement for underfloor heating.

The company's experience in acoustics will ensure that the integration of the underfloor heating system meets your requirements.

The floor details shown are known to comply with Approved Document E of the building regulations and in some cases Robust Details.

Should they not match your requirements, please contact Isomass Ltd who will be happy to discuss suitable alternatives.

For advice on treatment of services and penetrations, consult our brochure or visit our website:

www.isomass.co.uk



Technical enquiries

Tel: 0845 838 33 99

Fax: 0845 838 33 89

Email: info@isomass.co.uk