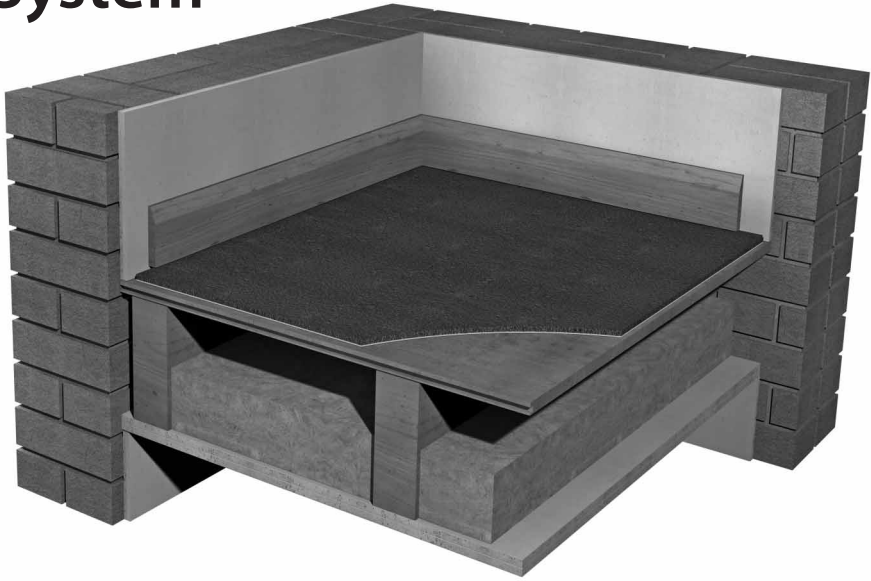


Impact Mat 100 System

Installation instructions



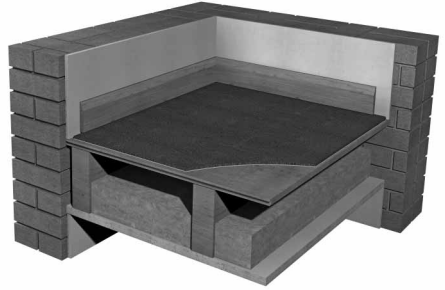
IMPACT & AIRBORNE IMPROVEMENT SYSTEM for

- Refurbishments
- Conversions
- Listed buildings
requiring minimal structural change



PRODUCT DATA

Overall size:	1200mm x 8.4m roll
Resilient layer:	6.5mm Isolate R
Weight:	27kgs per roll (2.6kg/m ²)



DESCRIPTION

- ❑ The isocheck Impact Mat 100 system is designed to reduce sound transmission through timber floors and staircases.
- ❑ To be used over floorboards for conversions, refurbishments, new build or listed buildings requiring minimal structural change.

- Finished floor material (for example, engineered timber).
- Isocheck Impact Mat 100 over floorboards.
- 200mm x 70mm timber joists @ 450mm centres with 100mm 45Kg/m³ insulation between joists.
- Lath and plaster ceiling or 25mm o/a double boarded ceiling (min. 20kg/m²) fixed to timber joists.

PREPARATION

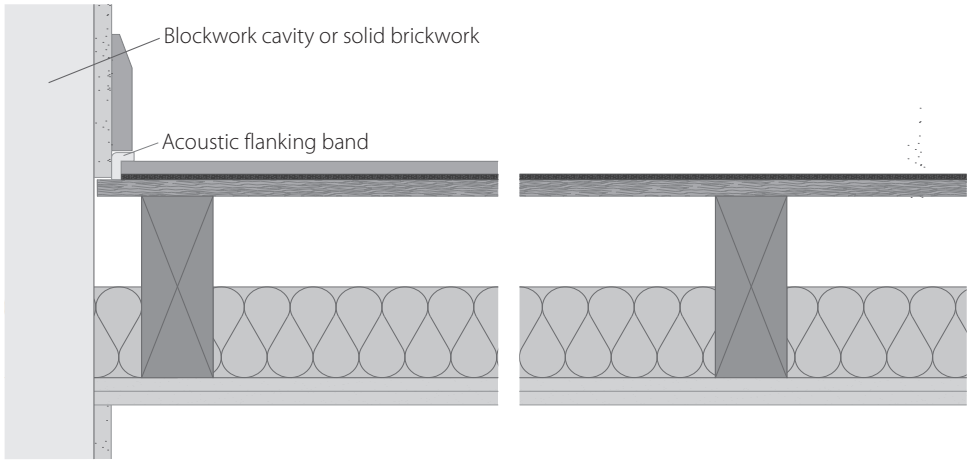
- ❑ Ensure sub-floor surface is smooth, dry and free from debris and any existing floor coverings such as vinyl or carpet tiles must be removed together with any adhesive residue.
- ❑ Secure all loose floorboards ensuring all nails and screws are driven flush and securely fixed.
- ❑ Overlay the timber sub-floor with large sheets of ply or hard board if the floorboards are irregular or uneven.
- ❑ Remove any doors that open into the room being treated along with skirting if required.

INSTALLATION - GENERAL

- ❑ Be aware that doors, skirting and socket height may need adjusting after the isocheck Impact Mat 100 installation.
- ❑ Where you intend to use ceramic tiles or vinyl as a floor finish please contact us for additional advise.

INSTALLATION

- ❑ Roll out isocheck Impact Mat 100 directly on top of the sub-floor so that the entire floor surface area is covered and that it is butted up to or turned up where it terminates at all perimeter walls.
- ❑ In the case of a carpet finish isocheck Impact Mat 100 will terminate at the edge of the gripper rail. In the case of a finished timber floor, the skirting should be removed and replaced once the mat has been returned on top of the finished floor.



Butt-joint Impact Mat 100 and seal with 75mm or 100mm wide tape.

- ❑ Bond to the sub-floor with isocheck Impact Mat tackifier adhesive where appropriate and butt the adjoining edges followed by standard (75mm or 100mm wide) building tape.
- ❑ Also tape the turned up edges to the wall to help with installation of a finished timber floor to receive the skirting later.
- ❑ Finished timber floors should be isolated from the skirting using isocheck Acoustic Flanking Band.
- ❑ Apply the finish floor surface on top of Impact Mat given due regard for the following.
 Carpets, Timber laminate panels and vinyl coverings can be placed directly over the Impact Mat 100 with an appropriate interlayer (as selected by the flooring contractor).
 All mechanical penetrations through the Impact Mat should be avoided e.g. A finished solid timber floor would commonly be pinned to a min. 12mm plywood interlayer.

PROTECTION

- ❑ Upon completion ensure the isocheck Impact Mat 100 is protected from any mechanical damage where appropriate.

HANDLING

- ❑ Please observe proper lifting methods and if transporting around site, by hand.

If in doubt on any area, please call Isomass prior to commencement of work.

Every effort has been taken in the preparation of this sheet to ensure the accuracy of representations contained herein. Recommendations as to the use of materials, construction details and methods of installation are given in good faith and relate to typical situations. However, every site has different characteristics and reliance should not be placed upon the foregoing recommendations. Advice can be given as to specific applications of the products, upon request to isomass building products.



Units 10 & 11, Avenue Business Park, Off Brockley Road,
Elsworth, Cambridgeshire CB23 4EY

Tel: 0845 838 33 99 • Fax: 0845 838 33 89 • Email: info@isomass.co.uk • www.isomass.co.uk