

Re-Mat LVT System

Installation instructions



18dB IMPACT IMPROVEMENT SYSTEM FOR LVT FLOOR FINISHES ON CONCRETE AND TIMBER FLOORS

- New Build
- Refurbishment
- Conversion



PRODUCT DATA

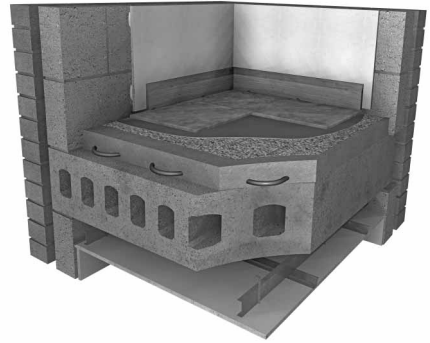
Roll size:	1m x 15m
Thickness:	1.6mm
Composition:	Cork / waste rubber composite
Weight:	1.04kg/m ²

DESCRIPTION

- ❑ The Isocheck Re-Mat LVT system is designed to reduce impact sound transmission through concrete and timber floor decks.
- ❑ Isocheck Re-Mat LVT is suitable for heavy domestic and general commercial uses in new build, refurbishments and conversions projects.
- ❑ Isocheck Re-Mat LVT should be placed between the subfloor and a luxury vinyl tile or similar finish.
- ❑ A heated floor system can also be installed beneath the Re-Mat LVT.

PREPARATION

- ❑ Ensure the subfloor surface is clean, dry, level, structurally sound and free from cracks and contamination. Any existing floor coverings such as vinyl or carpet tiles must be removed together with any adhesive residue.
- ❑ The subfloor must be as smooth as possible.
- ❑ Any imperfections in timber floors, such as warping, shrinkage and unevenness must be made good. All varnish and wax must be removed to ensure an effective bond.
- ❑ Remove any doors that open into the room being treated along with skirting if required.



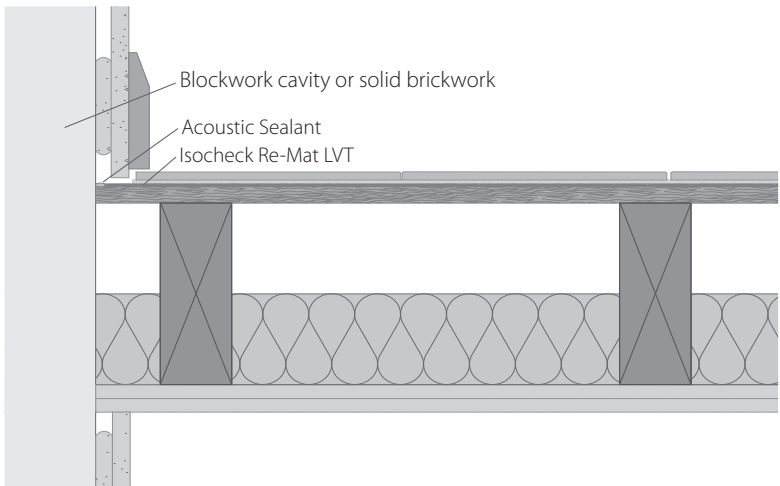
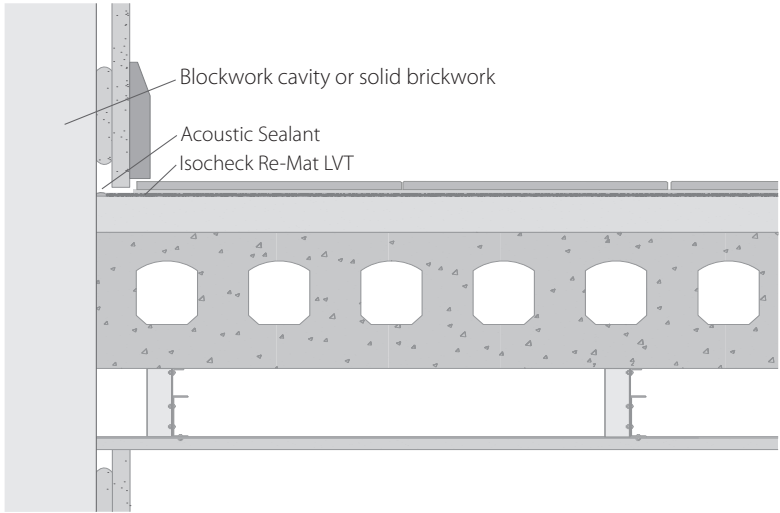
Re-Mat LVT over typical concrete/screed subfloor showing optional heated floor



Re-Mat LVT over typical timber subfloor

INSTALLATION - GENERAL

- ❑ Allow the underlay to acclimatise to room temperature for at least 24 hours prior to installation. Room temperature should be at least 18°C.
- ❑ After acclimatising, lay the underlay loose over the required area and cut to shape, adding at least 50mm to the finished lengths. Allow the mat time to relax.
- ❑ Room temperature during installation should be between 18°C - 35°C. Relative humidity should not exceed 75%.
- ❑ The temperature of the subfloor should not fall below 10°C.



INSTALLATION - RE-MAT LVT

- ❑ Cut the acclimatised Re-Mat LVT to size using a straight edge and utility knife, leaving a gap of 3mm at perimeters for expansion. Ensure the Re-Mat LVT is not in direct contact with any wall, column or skirting which has not been acoustically isolated.
- ❑ Apply Isomass LVT Mat Adhesive or similar to the subfloor starting at the longest wall, only applying enough to cover a workable area. Follow the adhesive manufacturer's instructions.
- ❑ Start laying the Re-Mat LVT at the longest wall, running the rolls in parallel and at 90° to the final floor finish to avoid coinciding joints.
- ❑ Butt joint all edges.
- ❑ Smooth out the Re-Mat LVT from the centre of a roll using a carpet glider or hand roller to remove all air bubbles and ensure a full bond.
- ❑ Roll the Re-Mat LVT into the adhesive using a 68kg articulated flooring roller to ensure complete adhesion along the entire length of the mat.
- ❑ Allow time for the Re-Mat LVT to fully bond, usually 24 hours, before installing the LVT or similar floor finish.
- ❑ Seal perimeters with acoustic sealant to isolate the Re-Mat LVT.

INSTALLATION -LVT

- ❑ Isocheck Re-Mat LVT is designed to be used **ONLY** with glued-down luxury vinyl tile (LVT) products or similar with a minimum thickness of 2mm.
- ❑ Follow the LVT manufacturer's instructions when installing the LVT.
- ❑ As the Isocheck Re-Mat LVT has limited porosity, some wet tile adhesives may take longer to be ready for tiling.

PROTECTION

- ❑ Upon completion ensure the Isocheck Re-Mat LVT is protected from any mechanical damage where appropriate.

HANDLING

- ❑ Please observe proper lifting methods and if transporting around site, by hand.

If in doubt on any area, please call Isomass prior to commencement of work.

Every effort has been taken in the preparation of this sheet to ensure the accuracy of representations contained herein. Recommendations as to the use of materials, construction details and methods of installation are given in good faith and relate to typical situations. However, every site has different characteristics and reliance should not be placed upon the foregoing recommendations. Advice can be given as to specific applications of the products, upon request to isomass building products.



Unit 14 Papworth Business Park, Stirling Way,
Papworth Everard, Cambridgeshire CB23 3GY

Tel: 0330 175 8228 • Fax: 01223 651 530 • Email: info@isomass.co.uk • www.isomass.co.uk