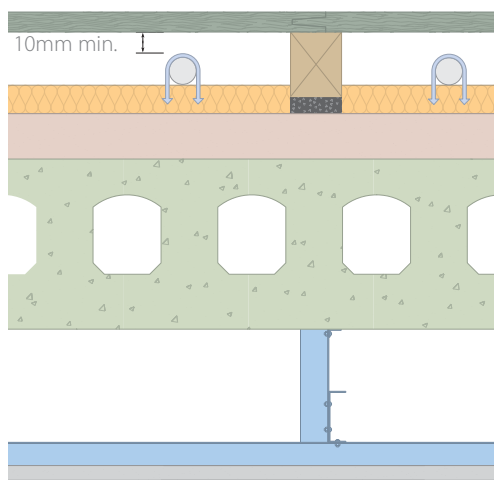
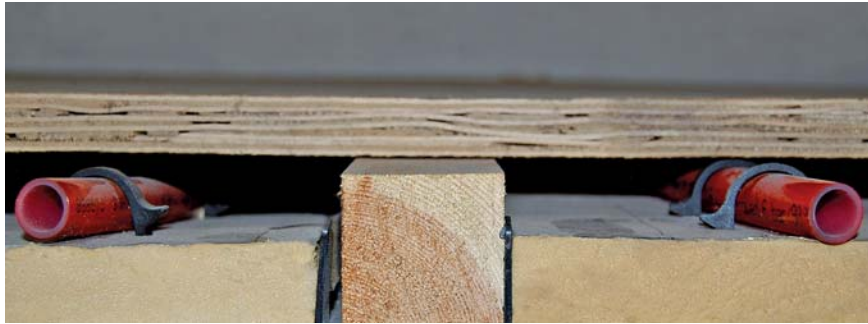
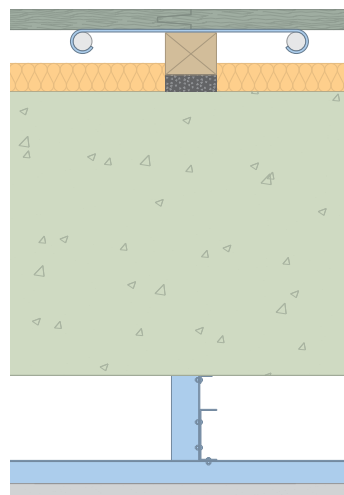
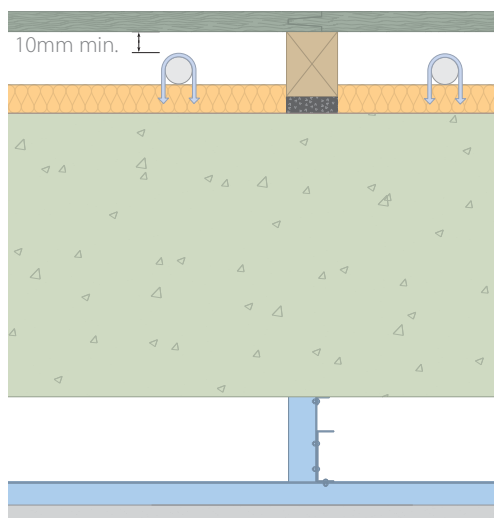


Isocheck Shallow Batten System

suspended system for level concrete floors incorporating an underfloor heating system



- 18mm or 22mm chipboard deck.
- Isocheck Shallow Batten @ 400mm max. centres.
- 25mm mineral fibre insulation 36kg/m³ with pipe fixings.
- bonded screed $\geq 80\text{kg/m}^2$ on min. 150mm hollow core concrete plank (300kg/m²) with metal frame suspended ceiling (min. 100mm void) and 8kg/m² plasterboard (top) *or*
- $\geq 2400\text{kg/m}^3$ cast in-situ concrete slab with metal frame suspended ceiling (min. 75mm void) and 10kg/m² plasterboard (bottom left).
- alternative arrangement using propriety supporting pipework tray (bottom right).



Isomass Ltd has developed a number of acoustic floor solutions that could complement the requirement for underfloor heating.

The company's experience in acoustics will ensure that the integration of the underfloor heating system meets your requirements.

The floor details shown are known to comply with Approved Document E of the building regulations and in some cases Robust Details.

Should they not match your requirements, please contact Isomass Ltd who will be happy to discuss suitable alternatives.

For advice on treatment of services and penetrations, consult our brochure or visit our website:

www.isomass.co.uk



Technical enquiries

Tel: 0330 175 8228

Fax: 01223 651 530

Email: info@isomass.co.uk