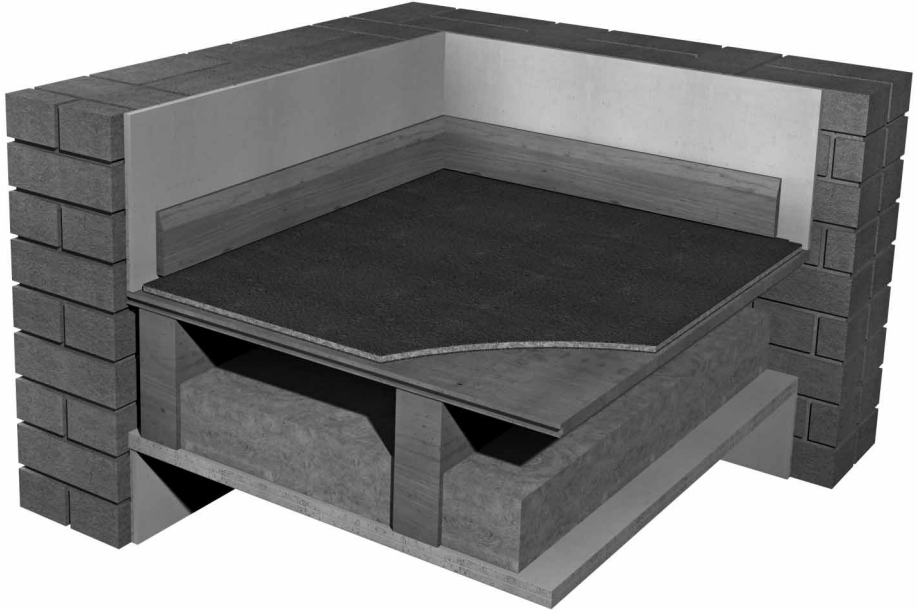


# Mat 15 System

## Installation instructions



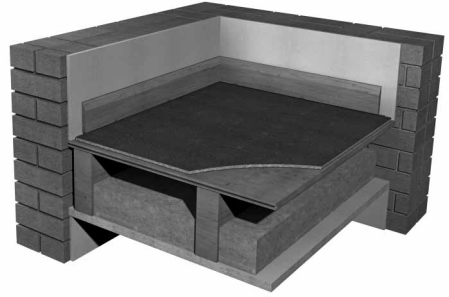
### IMPACT & AIRBORNE NOISE REDUCTION SYSTEM for

- Refurbishments
- Conversions
- Listed buildings requiring minimal structural change



## PRODUCT DATA

Overall size:	1200 x 1000mm mat
Resilient layer:	15mm tri-layer with reconstituted 8mm ACF foam core
Weight:	Approx. 13kg/m <sup>2</sup>



## DESCRIPTION

- ❑ The Monodeck Mat 15 system is designed to reduce airborne & impact sound transmission through timber or concrete floors. It is ideal for floor upgrades when looking to improve sound reduction on stairs and under engineered timber floors.
- ❑ To be used over floorboards for conversions, refurbishments or listed buildings requiring minimal structural change.

- Monodeck Mat 15.
- floorboards, min. 18mm thick.
- min. 200 x 50mm timber joists @ 400 mm centres.
- 100mm 45Kg/m<sup>3</sup> insulation between joists.
- lath and plaster ceiling or 25mm o/a double boarded ceiling (min. 20kg/m<sup>2</sup>) fixed to timber joists.

## PREPARATION

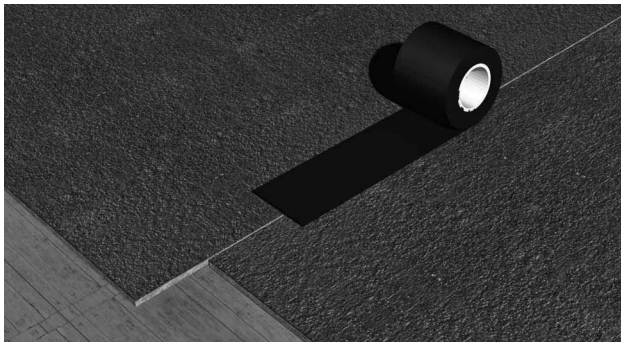
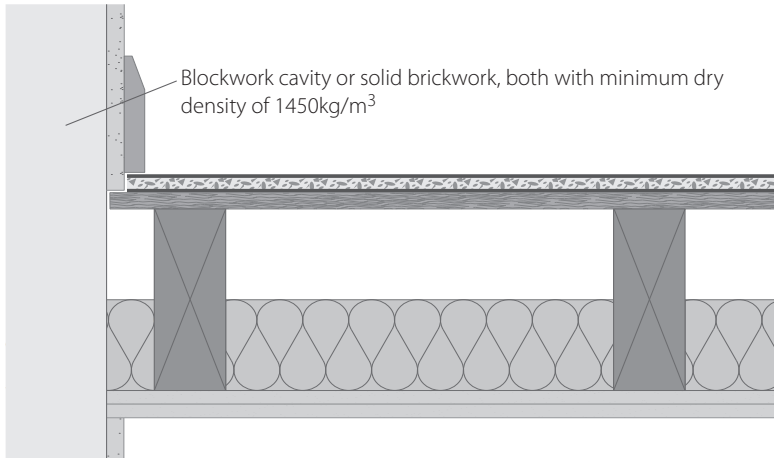
- ❑ Ensure sub-floor surface is smooth, dry and free from debris and any existing floor coverings such as vinyl or carpet tiles must be removed together with any adhesive residue.
- ❑ Secure all loose floorboards ensuring all nails and screws are driven flush and securely fixed.
- ❑ Overlay the timber sub-floor with large sheets of ply or hard board if the floorboards are irregular or uneven.
- ❑ Remove any doors that open into the room being treated along with skirting if required.

## INSTALLATION - GENERAL

- ❑ Be aware that doors, skirting and socket height may need adjusting after the Monodeck Mat 15 installation.
- ❑ Where you intend to use ceramic tiles or vinyl as a floor finish please contact us for additional advise.

## INSTALLATION

- ❑ Roll out Monodeck Mat 15 directly on top of the sub-floor so that the entire floor surface area is covered and that it is butted up to or turned up where it terminates at all perimeter walls.
- ❑ In the case of a carpet finish Monodeck Mat 15 will terminate at the edge of the gripper rail. In the case of a finished timber floor, the skirting should be removed and replaced once the mat has been returned on top of the finished floor.
- ❑ Bond to the sub-floor with Monodeck Mat 15 adhesive where appropriate and butt the adjoining edges followed by standard (50mm wide) building tape.
- ❑ Also tape the turned up edges to the wall to help with installation of a finished timber floor to receive the skirting later.



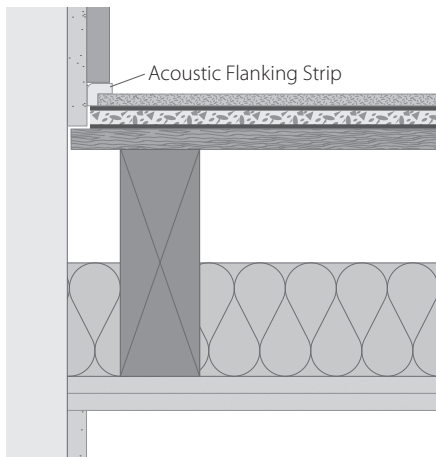
Butt-joint Monodeck Mat 15 and seal with 100mm tape.

- ❑ Apply the finish floor surface on top of Impact Mat given due regard for the following.  
Carpets, Timber laminate panels and vinyl coverings can be placed directly over the Monodeck Mat 15 with an appropriate interlayer (as selected by the flooring contractor).  
All mechanical penetrations through the Monodeck Mat 15 should be avoided e.g. A finished solid timber floor would commonly be pinned to a min. 12mm plywood interlayer.

- ❑ Most t&g or interlocking engineered timber panel floor finishes can be laid directly onto Monodeck Mat 15. Isomass can also supply a 9mm thick tongued & grooved MR-grade board to overlay Mat 15, if required.  
If in doubt please contact us with the floor specification.

## FLANKING STRIPS

- ❑ Isocheck Flanking Strips provide isolation of the finished floor flooring system from all vertical structures and penetrations and should be used when a solid timber floor finish is required.
- ❑ The Flanking Strip is trapped to the wall and returned down over the finished timber floor. The skirting board is then fixed to the wall securing the Flanking Strip between the skirting board and the floor.
- ❑ After the skirting board is installed, simply trim the Flanking Strip flush with a sharp knife.



## PROTECTION

- ❑ Upon completion ensure the Monodeck Mat 15 is protected from any mechanical damage where appropriate.

## HANDLING

- ❑ Please observe proper lifting methods and if transporting around site, by hand.

**If in doubt on any area, please call Isomass prior to commencement of work.**

Every effort has been taken in the preparation of this sheet to ensure the accuracy of representations contained herein. Recommendations as to the use of materials, construction details and methods of installation are given in good faith and relate to typical situations. However, every site has different characteristics and reliance should not be placed upon the foregoing recommendations. Advice can be given as to specific applications of the products, upon request to isomass building products.