

# Isocheck Shallow Batten System

suspended system for level concrete floors

CI/SfB  
(43) (Y) (P2)  
March 2010 Rev 3

Manufactured with cross linked Isopoli foam

Suitable for: **robust details - new build** • **E1 - new build** • **E1 - material change of use**

Conversions • Refurbishments • New build • In conjunction with underfloor heating systems

## product data sheet

### Product data

Overall batten size:	1800mm x 45mm x 54mm
Resilient layer thickness:	8mm
Resilient layer:	Cross linked Isopoli foam

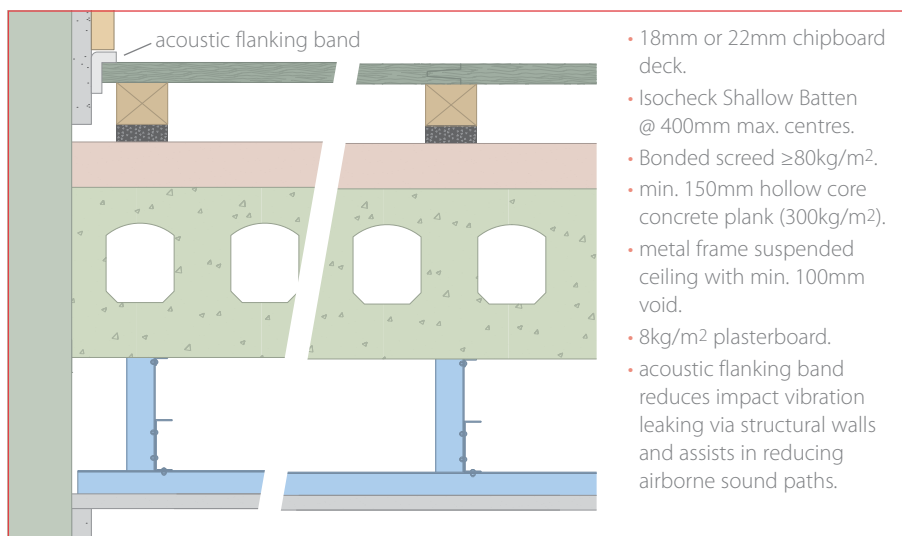
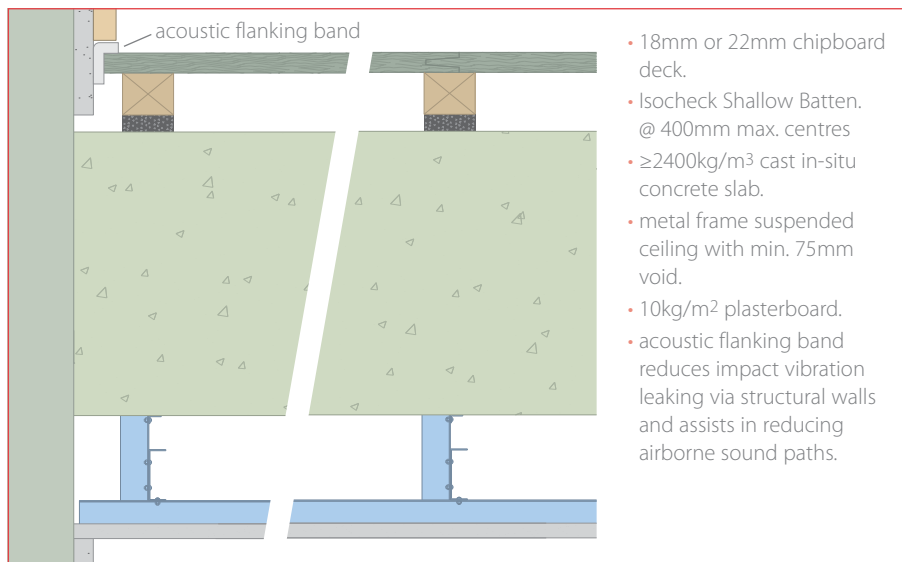
### Performance (on the two Robust Detail constructions below)

Treated floor meets with the Robust Detail descriptive FFT3, typically within Robust Details E-FC-1, E-FC-2, E-FC-7 and E-FS-1. Two typical alternative constructions are shown below.

### Description

Isocheck Shallow Batten system is designed to reduce sound transmission through a concrete structural sub-floor and consists of a layer of 8mm Isopoli bonded to a FSC-certified softwood batten.

When installed as part of a complete party floor construction it enables a concrete floor to meet the sound transmission standards of ADE 2003 (amended 2004). Should the requirement be for a batten height other than that specified on this page please contact us for further technical advice and suitability.



Every effort has been taken in the preparation of this sheet to ensure the accuracy of representations contained herein. Recommendations as to the use of materials, construction details and methods of installation are given in good faith and relate to typical situations. However, every site has different characteristics and reliance should not be placed upon the foregoing recommendations. Advice can be given as to specific applications.

### Specification

The acoustic floor shall be:

- **Isocheck Shallow Batten system**, by Isomass Ltd. St Johns Innovation Centre, Cowley Road, Cambridge, CB4 0WS and installed in accordance with manufacturer's instructions / recommendations.

### Installation

- Lay Isocheck Shallow Batten resilient layer side down, at 400mm max. centres for 18mm chipboard flooring or 500mm max. centres for 22mm chipboard flooring.
- Apply Isocheck Acoustic Angled Flanking Band on the edges of the chipboard just before they are pushed against the perimeter walls to isolate the board from the wall.
- Apply Isocheck adhesive to all tongued and grooved panel joints.
- Install skirting and trim off excess Flanking Band.
- Full installation instructions are available and must be used in conjunction when laying this floating floor system.

For advice on treatment of services and penetrations, consult our brochure or visit our website:

[www.isomass.co.uk](http://www.isomass.co.uk)

### Technical enquiries

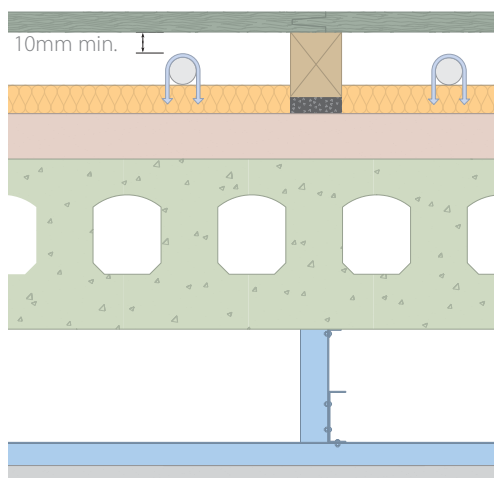
Tel: **0845 838 33 99**

Fax: **0845 838 33 89**

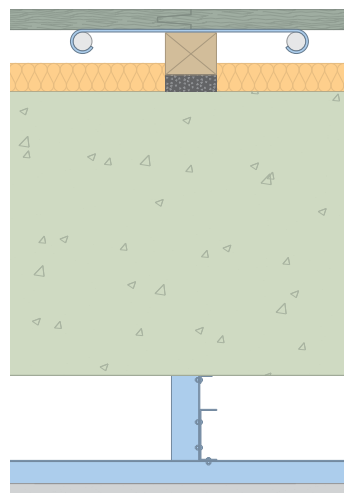
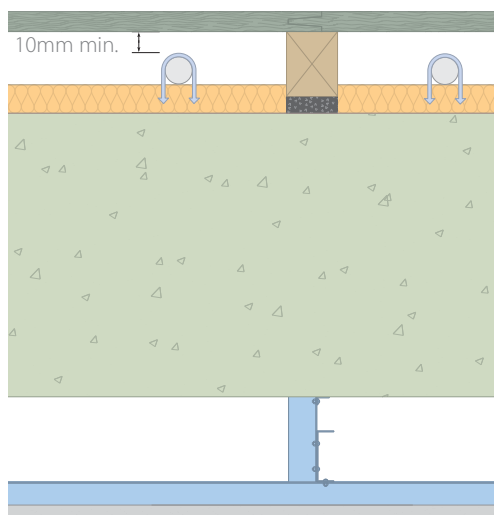
Email: [info@isomass.co.uk](mailto:info@isomass.co.uk)

# Isocheck Shallow Batten System

suspended system for level concrete floors incorporating an underfloor heating system



- 18mm or 22mm chipboard deck.
- Isocheck Shallow Batten @ 400mm max. centres.
- 25mm mineral fibre insulation 36kg/m<sup>3</sup> with pipe fixings.
- bonded screed  $\geq 80\text{kg/m}^2$  on min. 150mm hollow core concrete plank (300kg/m<sup>2</sup>) with metal frame suspended ceiling (min. 100mm void) and 8kg/m<sup>2</sup> plasterboard (top) *or*
- $\geq 2400\text{kg/m}^3$  cast in-situ concrete slab with metal frame suspended ceiling (min. 75mm void) and 10kg/m<sup>2</sup> plasterboard (bottom left).
- alternative arrangement using propriety supporting pipework tray (bottom right).



Isomass Ltd has developed a number of acoustic floor solutions that could complement the requirement for underfloor heating.

The company's experience in acoustics will ensure that the integration of the underfloor heating system meets your requirements.

The floor details shown are known to comply with Approved Document E of the building regulations and in some cases Robust Details.

Should they not match your requirements, please contact Isomass Ltd who will be happy to discuss suitable alternatives.

For advice on treatment of services and penetrations, consult our brochure or visit our website:

[www.isomass.co.uk](http://www.isomass.co.uk)



Technical enquiries

Tel: 0845 838 33 99

Fax: 0845 838 33 89

Email: [info@isomass.co.uk](mailto:info@isomass.co.uk)