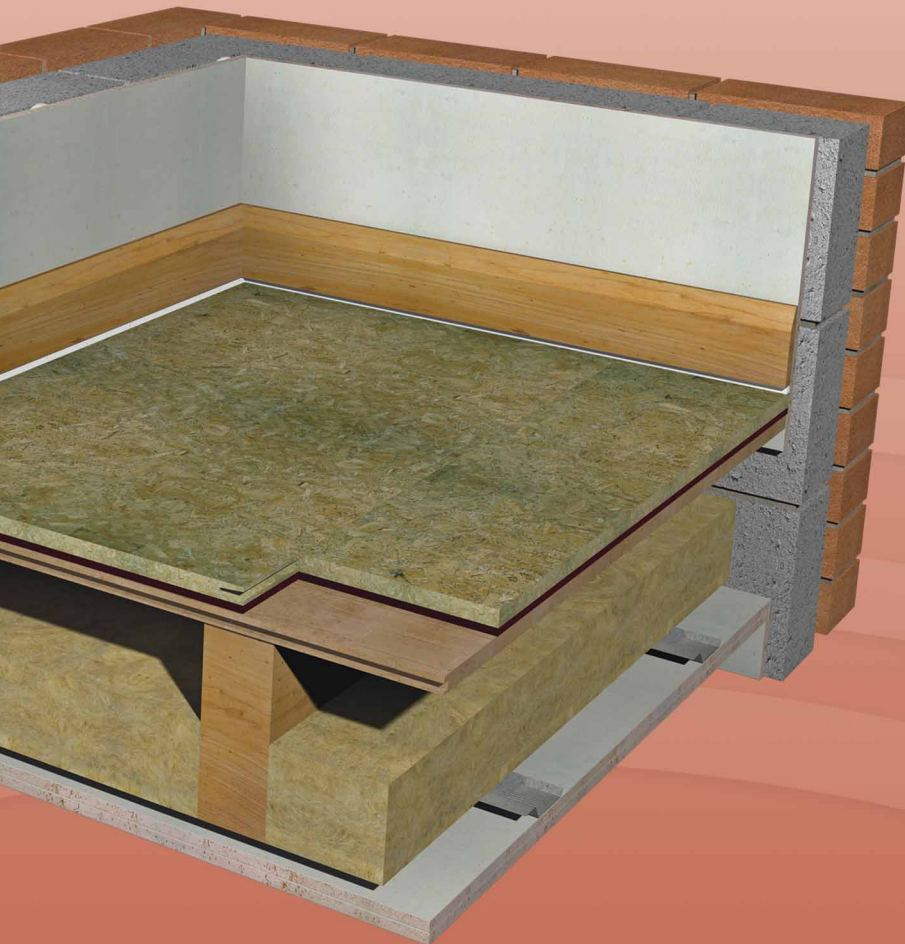


isocheck™

PRIMO® HL System



OVERLAY PLATFORM SYSTEM DIRECT TO FLOORBOARDS

- New build
- Conversions
- Refurbishments



DESCRIPTION

- ❑ The isocheck PRIMO HL (High Load) system is designed to reduce sound transmission through traditional joisted timber floors in bathrooms and kitchens.
- ❑ Isocheck PRIMO HL consists of a 5mm layer of cross linked Isopoli bonded to 18mm P5 V313 moisture resistant chipboard and is ideally suited for the loads and conditions associated with bathroom and kitchens.
- ❑ When installed as part of a complete sound reduction system, it enables a timber floor to meet the sound transmission regulations of Approved Document E 2003 and subsequent amendments in 2004, 2010, 2013 and 2015.

APPLICATIONS

- ❑ To be used over existing floorboards for new build, conversions or refurbishments in bathrooms and kitchens.



Taking the *mystery* out of Acoustics

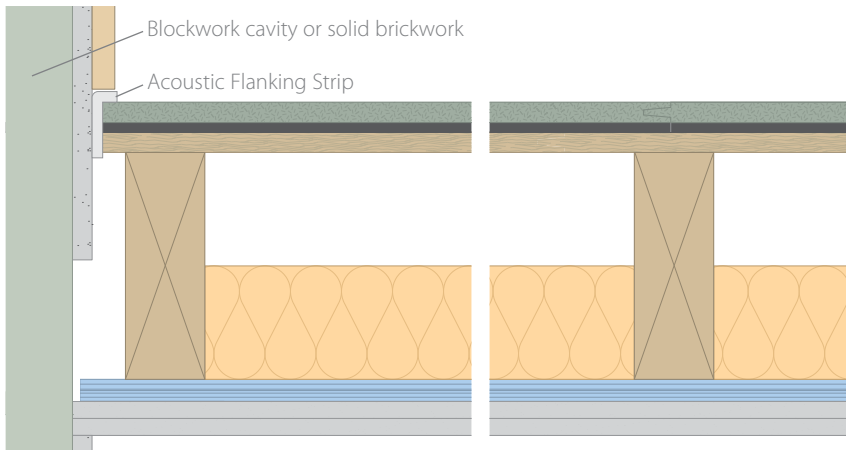
Product data

Overall size:	2400mm x 600mm x 23mm
Resilient layer thickness:	5mm
Resilient layer:	Cross linked Isopoli
Weight:	18.8kg per sheet

Performance

(On the constructions illustrated)

Treated floor with:	$D_{nT,w} + C_{tr}$	$L'_{nT,w}$
Isocheck PRIMO HL	≥45dB	≤62dB



- ❑ Isocheck PRIMO HL.
- ❑ Floorboards.
- ❑ 200mm x 70mm timber joists @ 450mm centres.
- ❑ 100mm 45kg/m³ insulation between joists.
- ❑ 20kg/m² double boarded 25mm o/a plasterboard on resilient bars @ 400mm centres perpendicular to joist direction.
- ❑ Acoustic flanking band reduces impact vibration leaking via structural walls and assists in reducing airborne sound paths.

Every effort has been taken in the preparation of this sheet to ensure the accuracy of representations contained herein. Recommendations as to the use of materials, construction details and methods of installation are given in good faith and relate to typical situations. However, every site has different characteristics and reliance should not be placed upon the foregoing recommendations. Advice can be given as to specific applications of the products, upon request to isomass building products.

www.isomass.co.uk
www.monodeck.co.uk

SPECIFICATION

The acoustic floor shall be:

- ❑ Isocheck PRIMO HL system, supplied by Isomass Ltd. Units 10 & 11, Avenue Business Park, Elsworth, Cambridgeshire CB23 4EY and installed in accordance with manufacturer's instructions / recommendations.

INSTALLATION

- ❑ Apply isocheck Acoustic Angled Flanking Strip on the edges of the Isocheck boards before they are pushed against the perimeter walls to isolate the board from the wall.
- ❑ Lay Isocheck PRIMO HL system over a structural timber sub-floor, in brick bond pattern, applying isocheck adhesive to all tongued and grooved panel joints.
- ❑ Install skirting and trim off excess Flanking Strip.
- ❑ Full installation instructions are available and must be used in conjunction when laying this floating floor system.

Please ask Isomass for guidance when considering the weight of any new blocks which will be incorporated in a wall directly surrounding a timber separating floor.