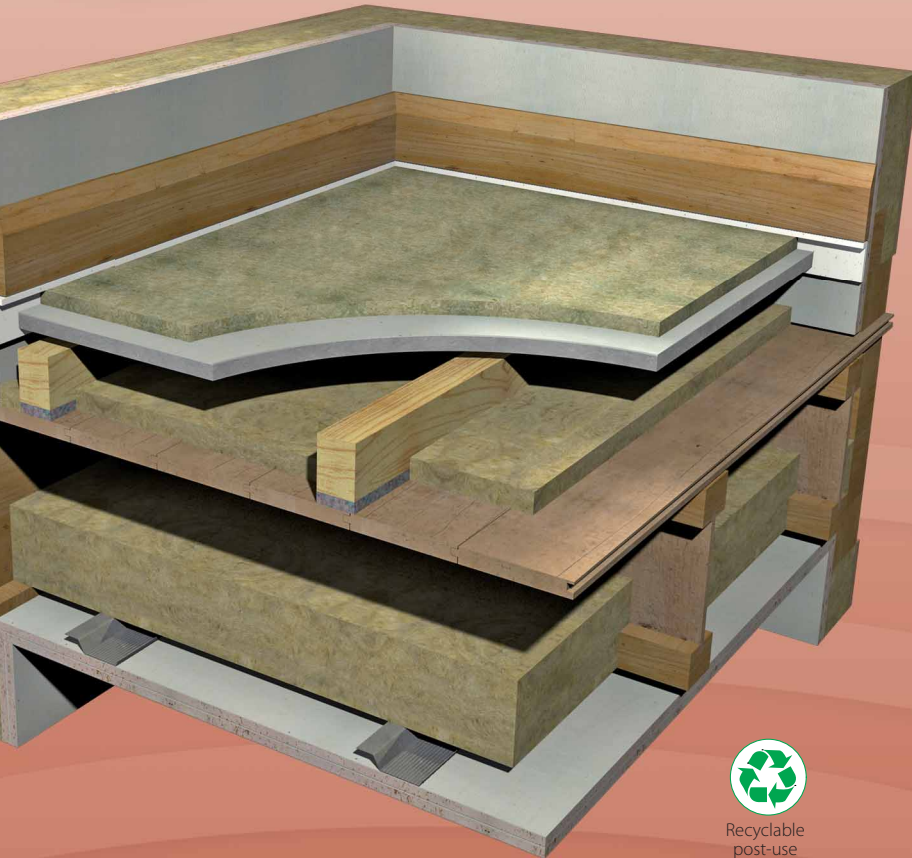


# isocheck™

## Deep Batten System for timber frame



Recyclable post-use

### SUSPENDED SYSTEM FOR TIMBER AND STEEL FLOORS

- New build
- Refurbishments
- Conversions
- In conjunction with underfloor heating systems



### DESCRIPTION

- ❑ The Isocheck Deep Batten system is designed to reduce transmission through timber floors within a timber frame structure.
- ❑ Isocheck Deep Batten consists of 15mm ACF (Acoustic Chip Foam) bonded to a 60mm softwood batten.
- ❑ When installed as part of a complete party floor construction it enables a timber floor to meet the sound transmission standards of ADE 2003 and subsequent amendments in 2004, 2010, 2013 & 2015.

### APPLICATIONS

- ❑ To be used over timber floors with a timber frame or masonry facade (to hide services or accommodate underfloor heating beneath the floor) and a new resilient bar ceiling for new build timber frame or steel frame projects, refurbishments and conversions. May also be used on other constructions, contact us for details.



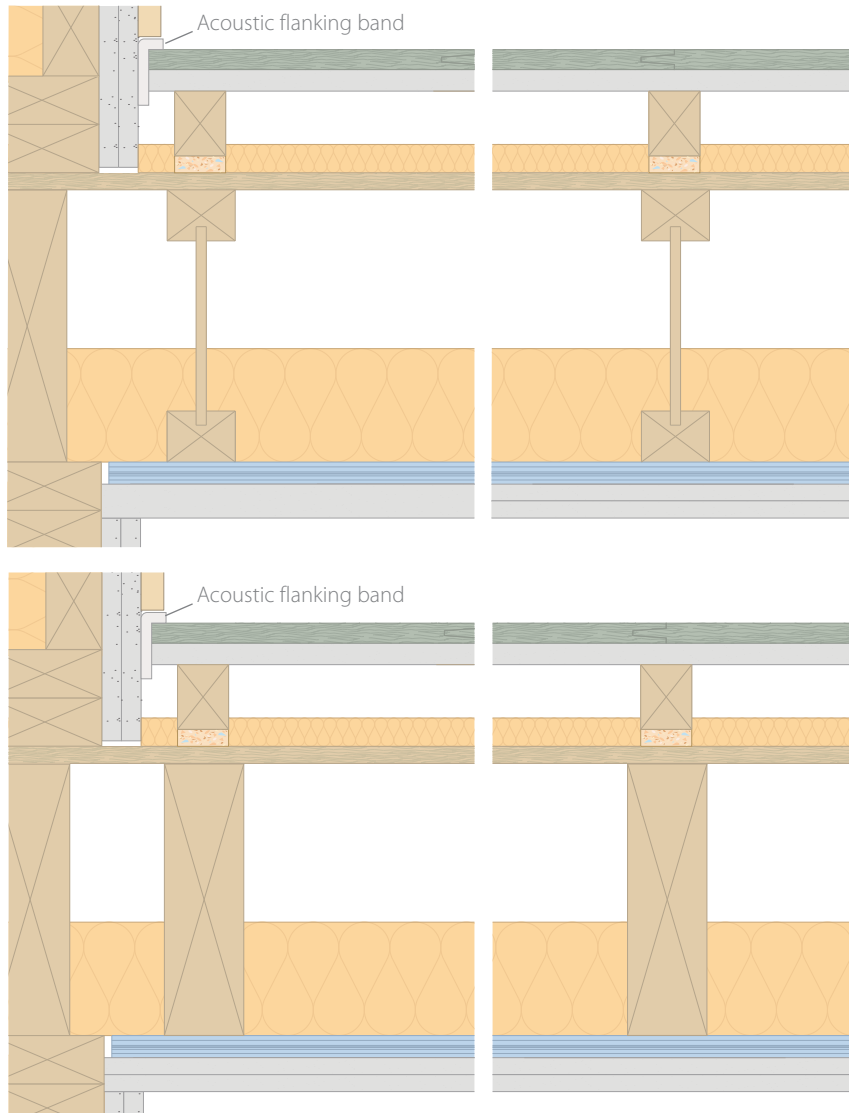
We take the *mystery* out of Acoustics

## Product data

Overall size:	1800mm x 45mm x 75mm
Resilient layer thickness:	Down to 14mm under normal load
Resilient layer:	13 - 14mm reconstituted ACF (Acoustic Chip Foam)

## Performance (on the two New Build Robust Detail constructions below)

Treated floor meets with the New Build Robust Detail descriptive FFT1, typically within Robust Detail E-FT-1, E-FT-2, E-FT-3, E-FT-7 and E-FS-2.



- ❑ 18mm or 22mm chipboard and 19mm plank plasterboard.
- ❑ Isocheck Deep Batten 75RD @ 400mm max. ctrs to run perpendicular to the joists.
- ❑ insulation - min. 13mm (33 - 36kg/m<sup>3</sup>) or min. 25mm (10 - 33kg/m<sup>3</sup>).
- ❑ composite, traditional or steel joists.
- ❑ 100mm quilt insulation (min.10kg/m<sup>3</sup>).
- ❑ min. 24kg/m<sup>2</sup> double boarded ceiling on resilient bars perpendicular to joist direction.

Every effort has been taken in the preparation of this sheet to ensure the accuracy of representations contained herein. Recommendations as to the use of materials, construction details and methods of installation are given in good faith and relate to typical situations. However, every site has different characteristics and reliance should not be placed upon the foregoing recommendations. Advice can be given as to specific applications of the products, upon request to isomass building products.

## SPECIFICATION

The acoustic floor shall be:

- ❑ Isocheck Deep Batten system, supplied by Isomass Ltd. Units 10 & 11, Avenue Business Park, Elsworth, Cambridgeshire CB23 4EY and installed in accordance with manufacturer's instructions / recommendations.

## INSTALLATION

- ❑ Fix Isomass Acoustic Flanking band at the floor perimeter.
- ❑ Lay Isocheck Deep Batten resilient layer side down, at 400mm max. centres with 19mm plank plasterboard and 18mm chipboard flooring over.
- ❑ Apply adhesive to the top of the acoustic batten and lay flooring, applying adhesive to all t&g panel joints.
- ❑ Install skirting and trim off excess Flanking Band.
- ❑ May also be installed in conjunction with underfloor heating systems.
- ❑ Full installation instructions are available and must be used in conjunction when laying this floating floor system.

For advice on treatment of services and penetrations, contact us, consult our brochure or visit our website.