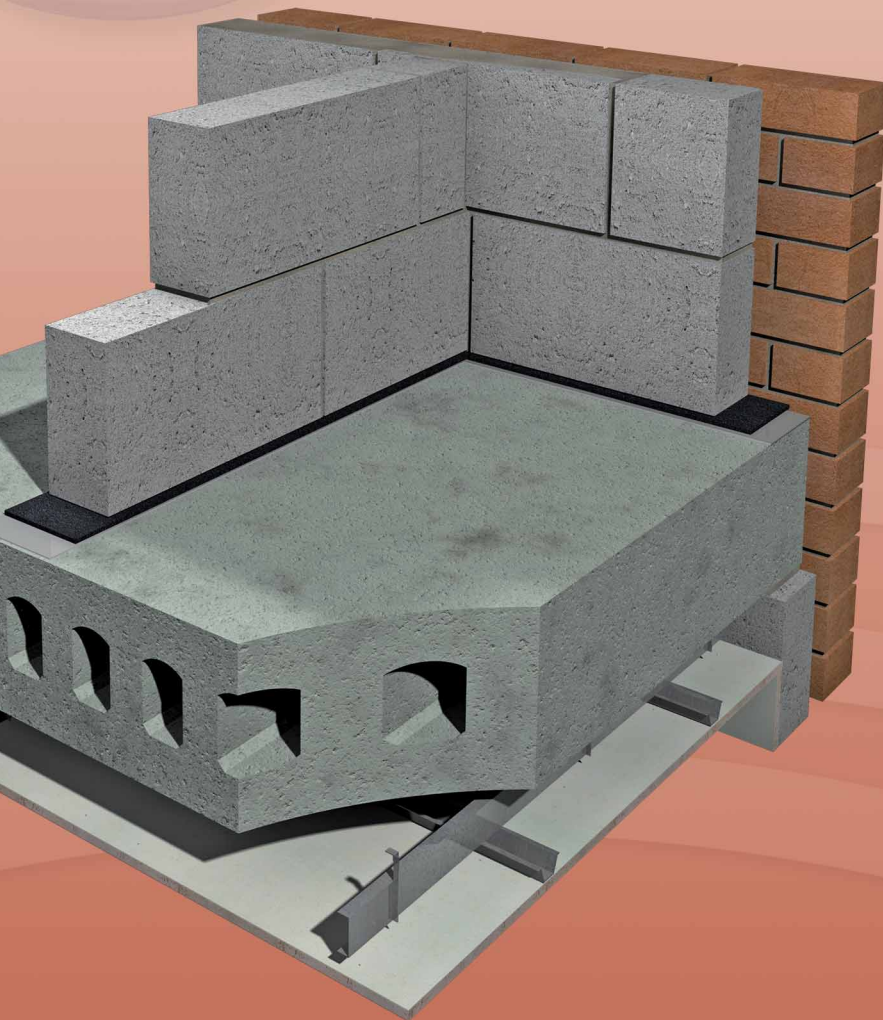


isocheck™

Re-Mat Isolation Strip for masonry walls



STRUCTURE BORNE NOISE IMPROVEMENT SYSTEM

- New build
- Conversion
- Refurbishment



DESCRIPTION

- ❑ Isocheck Re-Mat high load Isolating Strips are designed to be installed beneath blockwork walls to isolate the wall from the concrete floor and reduce structure borne noise.
- ❑ The Isolating Strips are composed of a rubber crumb which provides exceptional stability and minimal creep.

BENEFITS

- ❑ Offers long term performance without collapse or “bottoming” out under high load points.
- ❑ Resistant to ageing and deformation.
- ❑ Suitable for all types of projects.
- ❑ Slim thicknesses minimises construction heights.
- ❑ Wide range of thicknesses.
- ❑ Capable of withstanding loads up to and including 0.8N/mm² with low frequency performance achieved.
- ❑ Completely recyclable.



Taking the *mystery* out of Acoustics

Product data

Thicknesses:	5mm thick & 6mm thick options	
Standard widths*:	5mm thick	50, 75, 100, 120, 150, 190, & 200mm
	6mm thick	100, 120, 150, 180, 200 & 240mm
Roll length:	5mm thick	1.15m
	6mm thick	1.25m
Composition:	Rubber crumb	

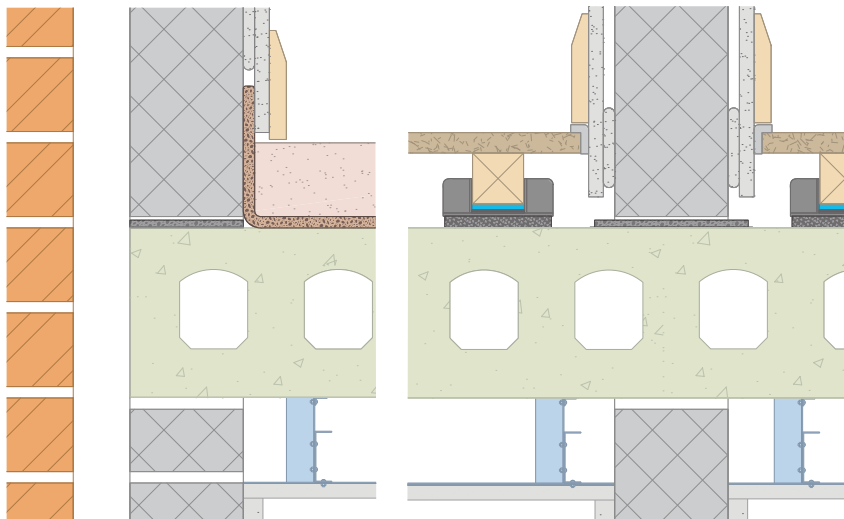
* other widths available upon request

Performance

Maximum load bearing capacity:	0.8N/mm ²
Temperature resistance:	-40°C up to +110°C (Short Term)
Static modulus of elasticity:	2.50 - 5.50N/mm ²
Dynamic modulus of elasticity*:	3.0 - 8.8N/mm ²
Compression set to DIN 53572**:	Approx. 5.90%
Tensile strength to DIN 53571:	Min. 0.90N/mm ²
Elongation at break to DIN 53571:	Min. 85%
Tear resistance to DIN 53515:	Min. 0.8N/mm
Flammability:	Class B2

*Figures dependant upon load and natural frequency and material thickness

**Measured 30 minutes after decompression with 50% deformation @ 23°C after 72 hours



- High density blockwork.
- Bedding mortar.
- Isocheck Re-Mat Isolating Strip.
- Bonding adhesive.
- Structural concrete floor.

Types of floor which can be used with Isocheck Re-Mat Isolating Strip

- Screed over Isocheck Screedcheck XL5 or XL9 (left detail).
- Isocheck Cradle with 18mm chipboard floor (right detail).

Every effort has been taken in the preparation of this sheet to ensure the accuracy of representations contained herein. Recommendations as to the use of materials, construction details and methods of installation are given in good faith and relate to typical situations. However, every site has different characteristics and reliance should not be placed upon the foregoing recommendations. Advice can be given as to specific applications of the products, upon request to isomass building products.

SPECIFICATION

The blockwork isolation strip shall be:

- Isocheck Re-Mat Isolation Strip, supplied by Isomass Ltd. Units 10 & 11, Avenue Business Park, Elsworth, Cambridgeshire CB23 4EY and installed in accordance with manufacturer's instructions / recommendations.

INSTALLATION

- Ensure the base floor is dry, clean (free of dirt and dust) and flat.
- Re-Mat Isolation Strip can be loose laid or bonded to the base floor using an appropriate adhesive in accordance with the adhesive manufacturer's instructions. Contact Isomass for a list of recommended adhesives.

Note: it is the sole responsibility of the installer to select bonded or loose laid for the Isolating Strip.

- Ensure that a width of strip is used which takes into account the thickness of the blockwork and any cladding/finishes. Any surplus material should be trimmed with a builder's knife and removed.
- Full installation instructions are available and must be used in conjunction when laying this floor system.